

Enjoy an Eco Friendly Living in Calicut





Confident in the city of 'Spices'

Elegantly rising up by the bustling Mavoor Road in 1.24 acres of eco-friendly prime land, Confident Exotica is a cluster of three edifices of 14 floors each in which 135 apartments are meticulously designed. Offering a choice of 2BHK and 3BHK homes with all luxurious amenities lavishly attached, Confident Exotica is Confident Group's maiden venture in Kozhikode.

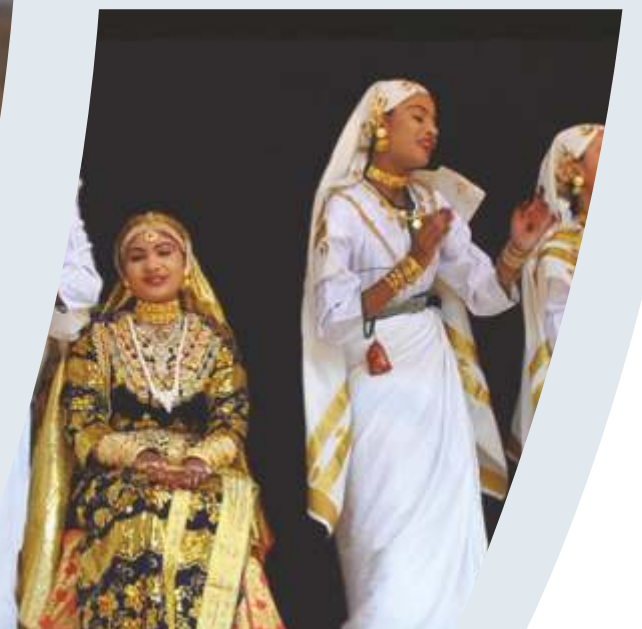
True to the Confident tradition of design and construction excellence, this is yet another Confident marvel that's all set to alter the lifestyle expression of Kozhikode.

Kozhikode.

The vivacious nerve point of Malabar. A lush green terrain which is caressed by the azure Arabian sea. A promising land where the Zamorins established a kingdom of glittering history. From times immemorial, the spice route of Kozhikode has attracted the Arabs, the Chinese, the Portuguese and travellers from all around the world with its matchless prosperity, clearly justifying the words of the globe-trotter Ibn Batuta, "We came to Calicut, one of the great ports of Malabar, and found there merchants from all parts of the world." Now, Kozhikode is a vibrant city where world class lifestyles narrate the altered attitudes of its residents. With its highly praised range of cuisine, unmatched cultural heritage, serene geographical ambience and the wholehearted hospitality of its populace, Kozhikode has become a highly coveted location for peaceful and confident living with all amenities within easy reach. Yes. Kozhikode is where fuses together the spirit of a golden past and the essence of modern living; just the way discerning people like it.

Universal web encyclopedia Wikipedia places on record, Calicut as India's second best city to reside.

RERA NO.: K-RERA/PRJ/141/2020



Eco living in the heart of 'Calicut City'

To be in the forest and the city at the same time is perhaps too much to dream of. Confident Exotica, on MLA Road, Kotttooli is neighbor to the largest eco-patch of 200 Acres in Kozhikode city limits. The biosphere named Sarovaram Park is a prestigious Eco project of Calicut Corporation. This is one among the 27 wetlands of National Importance identified for development by the Govt. of India. .

The wetlands are rich with 7 mangrove species, 29 mangrove associates and fauna ranging from protozoa to Otter. It is also a congenial habitat for 20 types of water birds, 2 bird associated with water, 3 birds associated with waterlogged reeds and 9 land birds. The 11 km long canal connects Korappuzha and Kallai rivers and brings in periodic influx of saline water, which makes the habitat ideal for mangrove, fisheries and other biota.

The major components of the project are canal walkway, boating facilities, Otter Park, Butterfly Park, bird sanctuary, aquarium, coracles, floating rafts, board walk, park/musical fountain, open air theatre, Interpretation centre etc.





amenities

SWIMMING POOL | KID'S POOL | CONFERENCE ROOM | MEDITATION ROOM | MULTIPURPOSE GYM | AEROBICS ROOM | KID'S PLAY AREA | LIBRARY | GUEST SUIT
| DAY CARE | PARTY HALL | SAUNA | JACUZZI MINI | BASKET BALL COURT | TABLE TENNIS | BILLIARDS | VISITORS LOBBY | CARROM | OPEN SHOWERS | CARDS ROOM
PLAY AREA | POOL DECK | INDOOR KIDS ROOM | READING ROOM | WALKING TRAIL | MULTIPURPOSE PRAYER HALL | TUITION CENTRE | ASSOCIATION ROOM
| CARETAKER ROOM | FOUNTAIN | VISITORS CAR PARK | WI - FI | DRIVERS ROOM | CENTRALISED GAS SYSTEM | STP | BIOGAS PLANT | PRIVATE TERRACE | CAR WASH
FACILITY | LOCKER FACILITY | SECURITY ALARM | ON CALL MAINTENANCE | INTERCOM FACILITY | 1 KVA POWER BACKUP | AUTOMATED SHOE SHINER

*"This brochure is conceptual and the pictures are for representational purpose only and does not contribute a legal offering.
The promoters reserve the right to alter/delete/add specifications mentioned herein"*

specifications

1. **Structure:** Built on solid foundation, the sturdy framed structure with columns and beams provides a secure frame-work for the entire building.
2. **Wall:** Concrete blocks/bricks protect you from the nature's weather elements.
3. **Electrical:** Concealed conduits with high-grade copper wire connections for 24/7 safety and adequate points for power and lighting. Provision for split A/C to keep your apartment cool in the summer heat.
4. **Painting (internal walls):** Premium emulsion roller-finished paint with cheerful colours that add colour to your lifestyle.
5. **Painting (internal roof):** Premium distemper with matching white colour.
6. **Painting (External):** Good quality weather - shielded paints keep your investment looking as good as new for ages.
7. **Switches:** Sophisticated and trendy looking modular /equivalent switches in Confident/equivalent standards that lights your world of joy.
8. **Doors (Main Door):** Sturdy frame section with paneled hard wood door and sparkling stainless steel fixtures with Confident/equivalent branded locks that protect a world of happiness inside.
9. **Doors (Internal Doors):** Prehung Skin doors from Jacson/Equivalent
10. **Windows:** Latest trend high quality UPVC windows with glass allows good natural lighting inside.
11. **Flooring:** Vitrified tiles for living, dining, and bedrooms. Kitchen and toilet flooring with good quality ceramic tiles. Elegant granite tiles/equivalent for the common area flooring.
12. **Dado tiling:** 2 feet height & 7 feet height well adorned glazed dado tile in Kitchen & toilets respectively makes maintenance and cleaning a breeze.
13. **Sanitary Fixtures:** Hindware/ Confident/ Cera/ equivalent sanitary fixtures complement the rest of your dream home.
14. **CP Fittings:** Convenient and fashionable top of the line chromium plated tap fittings for bathrooms and kitchens in Confident/Equivalent brands.
15. **Cooking Platform:** Classy granite slab /Latest artificial material for cooking platform, having trendy Stainless Steel sink with drain board.
16. **Water supply:** Underground and overhead storage, tanks of suitable capacity in addition to water source from captive well means no more water worries.
17. **Sewage System:** Safe, environment friendly Sewage Treatment Plant (STP) to keep harmony with its surroundings.
18. **Centralised Gas Connection:** Centralised Gas Connection will provide a safe and hazard free environment in your dream home.
19. **Intercom Facility:** The internal network helps to make the community united.



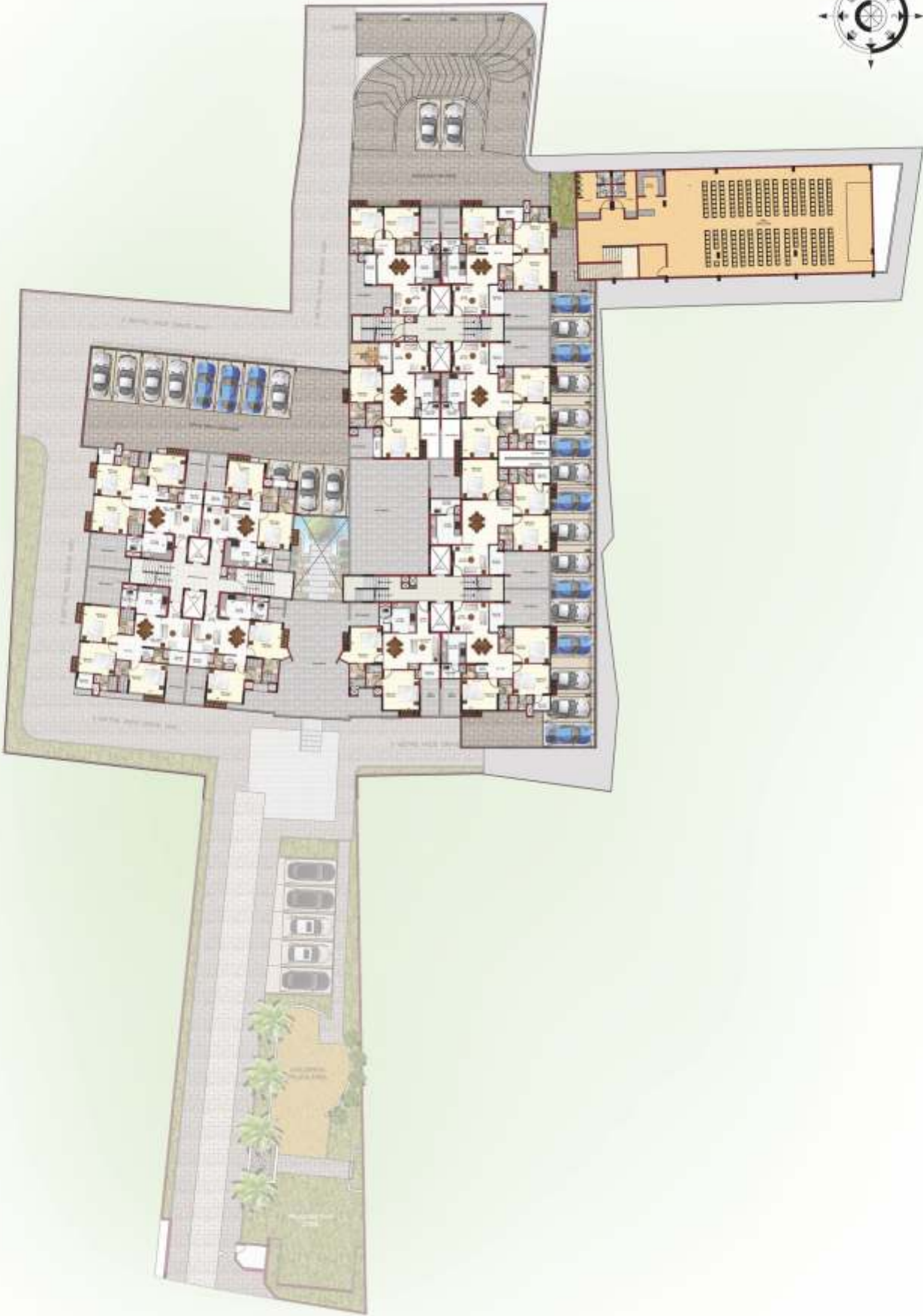
"This brochure is conceptual and the pictures are for representational purpose only and does not contribute a legal offering. The promoters reserve the right to alter/delete/add specifications mentioned herein"



GROUND FLOOR PLAN

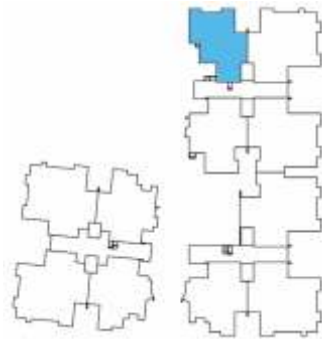


FIRST FLOOR PLAN

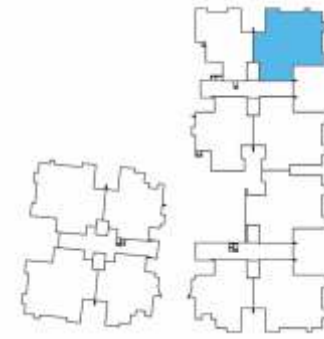


SECOND FLOOR PLAN

A Tower



ALLOTMENT PLAN
THIRD TO TENTH FLOOR PLAN



ALLOTMENT PLAN
THIRD TO TENTH FLOOR PLAN

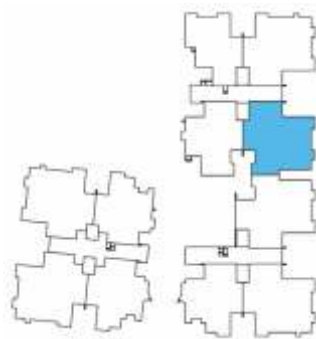


A 301 to A1001 - 2BHK
Area:- 1082 Sq.Ft.
Carpet Area:- 722 Sq.Ft.



A 302 to A1002 - 3BHK
Area:- 1464 Sq.Ft.
Carpet Area:- 963 Sq.Ft.

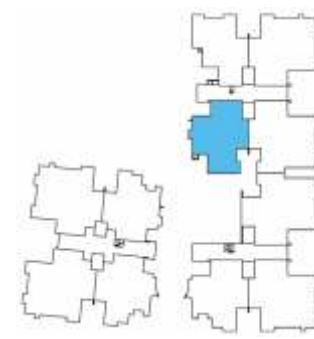
A Tower



ALLOTMENT PLAN
THIRD TO TENTH FLOOR PLAN



A 303 to A1003 - 3 BHK
Area:- 1488 Sq.Ft.
Carpet Area:- 993 Sq.Ft.

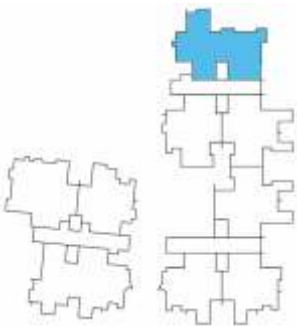


ALLOTMENT PLAN
THIRD TO TENTH FLOOR PLAN



A 304 to A1004 - 2 BHK
Area:- 1199 Sq.Ft.
Carpet Area:- 783 Sq.Ft.

A Tower

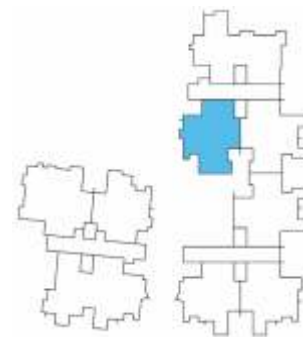
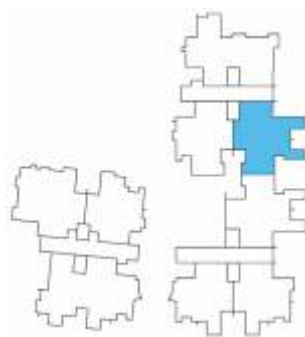


ALLOTMENT PLAN
TWELFTH TO FOURTEENTH FLOOR PLAN



A 1201 to A1401 - 3 BHK
Area:- 1597 Sq.Ft.
Carpet Area:- 1004 Sq.Ft.

A Tower



ENTRY
ALLOTMENT PLAN
TWELFTH TO FOURTEENTH FLOOR PLAN

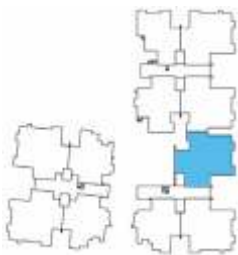
ALLOTMENT PLAN
TWELFTH TO FOURTEENTH FLOOR PLAN
ENTRY



A 1202 to A 1402 - 2 BHK
Area:- 1206 Sq.Ft.
Carpet Area:- 783 Sq.Ft.

A 1203 to A 1403 - 2 BHK
Area:- 1199 Sq.Ft.
Carpet Area:- 783 Sq.Ft.

B Tower

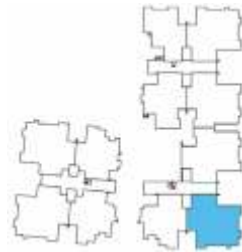


ALLOTMENT PLAN
THIRD TO TENTH FLOOR PLAN



B 302 to B1002 - 3 BHK
Area:- 1573 Sq.Ft.
Carpet Area:- 1045 Sq.Ft.

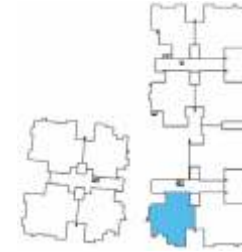
B Tower



ALLOTMENT PLAN
THIRD TO TENTH FLOOR PLAN



B 303 to B1003 - 3 BHK
Area:- 1465 Sq.Ft.
Carpet Area:- 972 Sq.Ft.



ALLOTMENT PLAN
THIRD TO TENTH FLOOR PLAN



B 304 to B1004 - 2 BHK
Area:- 1141 Sq.Ft.
Carpet Area:- 769 Sq.Ft.

B Tower

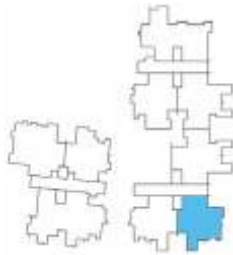


ALLOTMENT PLAN
TWELFTH TO FOURTEENTH FLOOR PLAN



B 1202 to B 1402 - 2 BHK
Area:- 1288 Sq.Ft.
Carpet Area:- 833 Sq.Ft.

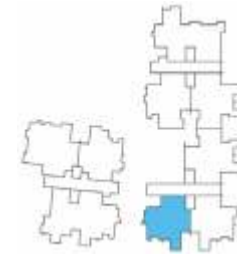
B Tower



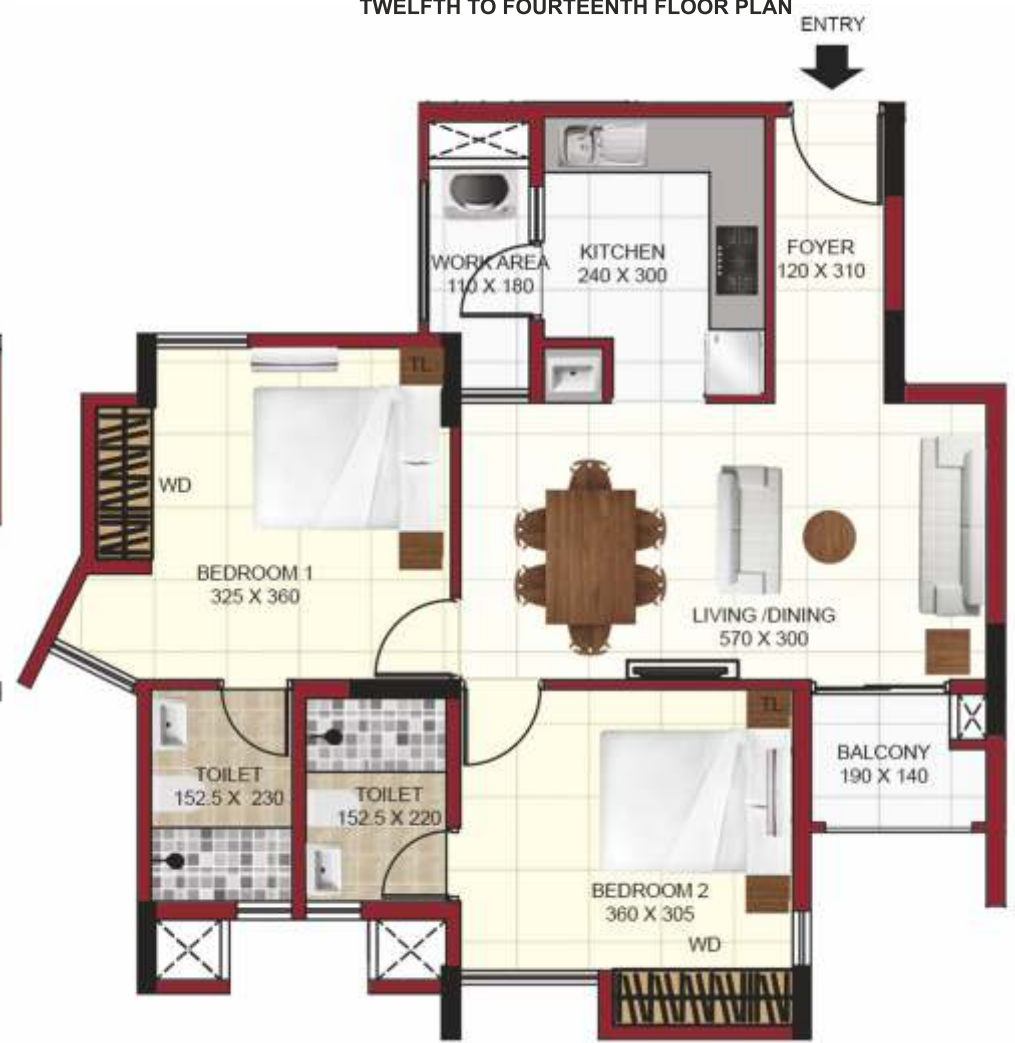
ALLOTMENT PLAN
TWELFTH TO FOURTEENTH FLOOR PLAN



B 1203 to B 1403 - 2 BHK
Area:- 1058 Sq.Ft.
Carpet Area:- 702 Sq.Ft.



ALLOTMENT PLAN
TWELFTH TO FOURTEENTH FLOOR PLAN

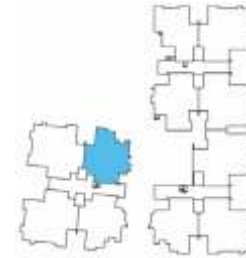


B 1204 to B 1404 - 2 BHK
Area:- 1056 Sq.Ft.
Carpet Area:- 711 Sq.Ft.

C Tower



ALLOTMENT PLAN
THIRD TO TENTH FLOOR PLAN



ALLOTMENT PLAN
THIRD TO TENTH FLOOR PLAN

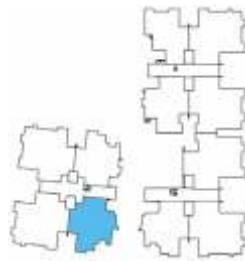


C 301 to C 1001 - 3 BHK
Area:- 1440 Sq.Ft.
Carpet Area:- 972 Sq.Ft.

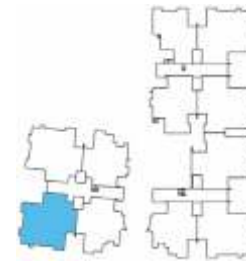


C 302 to C 1002 - 2 BHK
Area:- 1114 Sq.Ft.
Carpet Area:- 748 Sq.Ft.

C Tower



ALLOTMENT PLAN
THIRD TO TENTH FLOOR PLAN



ALLOTMENT PLAN
THIRD TO TENTH FLOOR PLAN

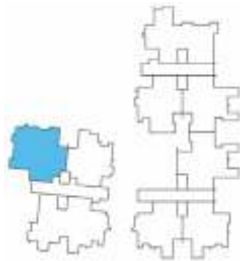


C 303 to C 1003 - 2 BHK
Area:- 1158 Sq.Ft.
Carpet Area:- 781 Sq.Ft.

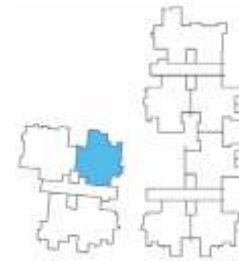


C 304 to C 1004 - 3 BHK
Area:- 1466 Sq.Ft.
Carpet Area:- 990 Sq.Ft.

C Tower



ALLOTMENT PLAN
TWELFTH TO FOURTEENTH FLOOR PLAN



ALLOTMENT PLAN
TWELFTH TO FOURTEENTH FLOOR PLAN

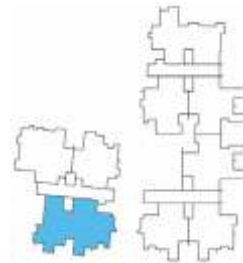


C 1201 to C 1401 - 3 BHK
Area:- 1440 Sq.Ft.
Carpet Area:- 972 Sq.Ft.



C 1202 to C 1402 - 2 BHK
Area:- 1114 Sq.Ft.
Carpet Area:- 748 Sq.Ft.

C Tower



ALLOTMENT PLAN
TWELFTH TO FOURTEENTH FLOOR PLAN



C 1203 to C 1403 - 3 BHK
Area:- 1824 Sq.Ft.
Carpet Area:- 1137 Sq.Ft.

a Confident Note

Confident Group, pioneers in introducing novel housing concepts, is one of the fastest growing, multi-business conglomerate, headquartered in Bangalore. With interests in Infrastructure, Chartered Airlines, Hospitality, Education, Entertainment and Health care, Confident Group has excelled and made giant strides in all areas of its operations.

Confident Group, The Best Housing Brand of Kerala, has already made its mark of distinction as the leading developers of space. With over 5000 apartments, villas and plotted township projects spread across Bangalore, Kochi, Trivandrum & Thrissur at various stages of construction and completion, Confident Group is today the number one selling brand. At Confident Group, we practice a philosophy of continuous improvement that ensures maximum client satisfaction. Quality in terms of technological excellence, aesthetic considerations of design and layout, as well as service defined by consistency is what places us above the rest in the industry.



ONGOING PROJECTS



WILLOW
Calicut
K-RERA/PRJ/035/2020



LOTUS
Thrissur
K-RERA/PRJ/016/2020



WHITE BERRY
Kochi
K-RERA/PRJ/130/2020



PINNACLE
Kochi
K-RERA/PRJ/102/2020



FREESIA
Kochi
K-RERA/PRJ/104/2020



IRIS
Kochi
K-RERA/PRJ/025/2020



CYGNUS
Kottayam
K-RERA/PRJ/049/2020



CROWN
Trivandrum
K-RERA/PRJ/018/2020



ZENITH
Trivandrum
K-RERA/PRJ/106/2020



GREENFIELD
Trivandrum
K-RERA/PRJ/101/2020



PRIME III
Trivandrum
K-RERA/PRJ/174/2020

NEWLY LAUNCHED



GREENWICH
Calicut
K-RERA/PRJ/287/2020



MAPLE
Thrissur
K-RERA/PRJ/224/2020



JOINVILLE
Kochi
K-RERA/PRJ/327/2020



WHITE HOUSE
Kochi
K-RERA/PRJ/288/2020

**READY TO OCCUPY
PROJECTS IN
TRIVANDRUM, KOCHI,
THRISSUR & CALICUT.**



HIGHEST QUALITY

Confident House, 28/975, Thondayad Bypass Jn., Calicut-673 017
+91 8129 32 1111, +91 495 309 3333. E-mail: sales@confident-group.com

KOCHI	THRISSUR	KOTTAYAM	TRIVANDRUM	BANGALORE	UAE
Confident House, 868/2, S A Road, Vyttila, Kochi- 682 019, Ph: +91 484 4093333, +91 98959 04444, +91 98959 14444	Confident House, 11/605, Mathrubhumi Jn., Veliyannur (PO), Thrissur- 680 021 Ph: +91 487 2421407, +91 974616 4444 +91 975617 4444	Confident House, #206, 2nd Floor, Mannakulathil Towers, LBS Road, Collectorate PO, Kottayam - 686002, India Phone: 0481 2943333	Confident Group, TC 13/1151 (7), Kannammoola, Medical College P.O, 695 011 Ph: +91 471 4083333, + 91 98955 13333 +91 98955 23333	Confident Projects Office, Confident Propus, #6, Langford Town, Hosur Main Road, Bangalore 560025 Ph: +91-8040666999	Confident Projects India Pvt. Ltd. Hamsah Building, Behind Ansar Gallery, Karama, Dubai - PO Box- 87566 Ph: +971-553387577



THE BEST HOUSING BRAND OF KERALA

This Brochure is purely conceptual and does not constitute a legal offering. The promoters/developers reserve the right to alter / delete / add specification or design mentioned herein.