

THE FUTURE IS CONFIDENT



HIGHEST QUALITY

CORPORATE OFFICE: BANGALORE

Confident House, 4, BTM Ring Road, 1st Stage BTM Layout, Bangalore- 560 068, Ph: +9180 4011 3333, +91 99 161 13333
E-mail: slaes@confident-group.com

DUBAI

Confident House,
103, Oriental House- 1,
Bank Street, Burdubai,
Dubai, PO Box- 31599
Ph: +971 43977747

KOCHI

Confident House, 868/2,
S A Road, Vyttila,
Kochi- 682 019,
Ph: +91 484 4093333,
+91 98959 04444,
+91 98959 14444

THRISSUR

Confident House,
11/605, Mathrubhumi Jn.,
Veliyannur (PO), Thrissur- 680 021
Ph: +91 487 2421407,
+91 974616 4444
+91 975617 4444

TRIVANDRUM

Confident Group,
TC 13/1151 (7), Kannammoola,
Medical College P.O, 695 011
Ph: +91 471 4083333,
+ 91 98955 13333
+91 98955 23333

CALICUT

Confident House, 28/975,
Thondayad Bypass Jn.,
Calicut- 673 017
+91 8129 42 1111
+91 495 309 3333


CONFIDENT GROUP[®]
www.confident-group.com
THE FUTURE IS CONFIDENT

No.1 SELLING BRAND IN KERALA + KARNATAKA

This Brochure is purely conceptual and does not constitute a legal offering. The promoters/developers reserve the right to alter / delete / add specification or design mentioned herein


LUXURY APARTMENTS
NEAR ALUVA, KOCHI

It's time for
your dream



www.confident-group.com

We are, we will...

Confident Group is a rapidly thriving conglomerate, headquartered in Bangalore with operations in Kochi, Trivandrum, Trichur, Calicut, Mumbai, Dubai and Overseas. Diversified into six verticals, namely- Infrastructure, Hospitality, Aviation, Entertainment, Education and Health Care, the group is currently deploying 122 projects spanning across 7,51,34,410 sq.ft. of land in the infrastructure sphere, which includes Gated communities of Townships, Villas, Apartments, Commercial Towers, Malls, Software Towers, Parks, Hotels and Resorts across prime locations in Bangalore, Kochi, Trivandrum, Trichur, Dubai, and other locations.

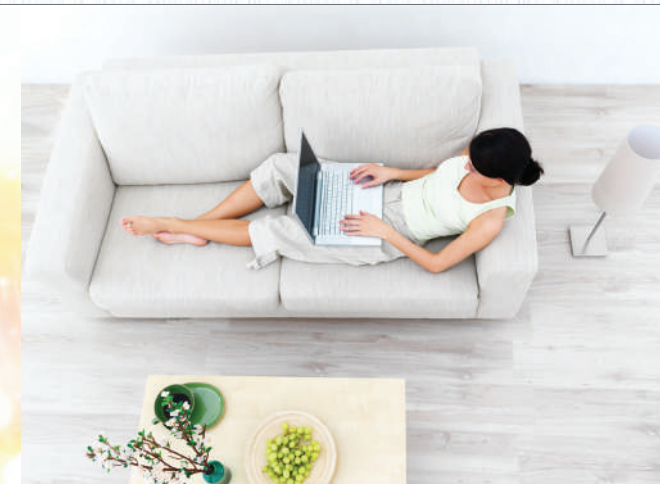
The Group has in-depth knowledge in quality and system orientation and is an accredited certified Conglomerate with ISO 9001:2008 for Quality management System, ISO 14001:2004 for Environmental Management System and OHSAS. 18001: 2007 for Occupational Health & Safety Assessment Series Certifications. The Group is a "Zero Debt Group" which means that the Group is implementing and controlling all operations without any external source of funding.

CONFIDENT
Oberon
LUXURY APARTMENTS
NEAR ALUVA, KOCHI

luxuriously simple!

Your dream of a luxurious place to live in, that too within your budget was always a distant one. Now Confident Group is making it a reality with Confident Group "Oberon" luxury apartments. Here your dreams turn real without compromising your needs. Confident Oberon is a 2 & 3 BKH apartment project with G+12 Floors at a beautiful location near Alwaye. Add this "plus" thing to your life and make it a celebration.

Wake up to the serenity of the village atmosphere and live calmly while enjoying every point of luxury at Confident Oberon... Here at Oberon, enjoy the peace and quietness of a country side while having close access to the comforts and conveniences of the city. Confident Group makes life simply luxurious with its unmatched facilities and the architectural marvel. Confident Group proudly introduces the finest living so that anyone can accomplish his dream...

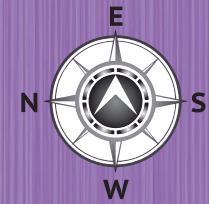


Aerial View



Layout Plan





Block A Typical Floor Plan



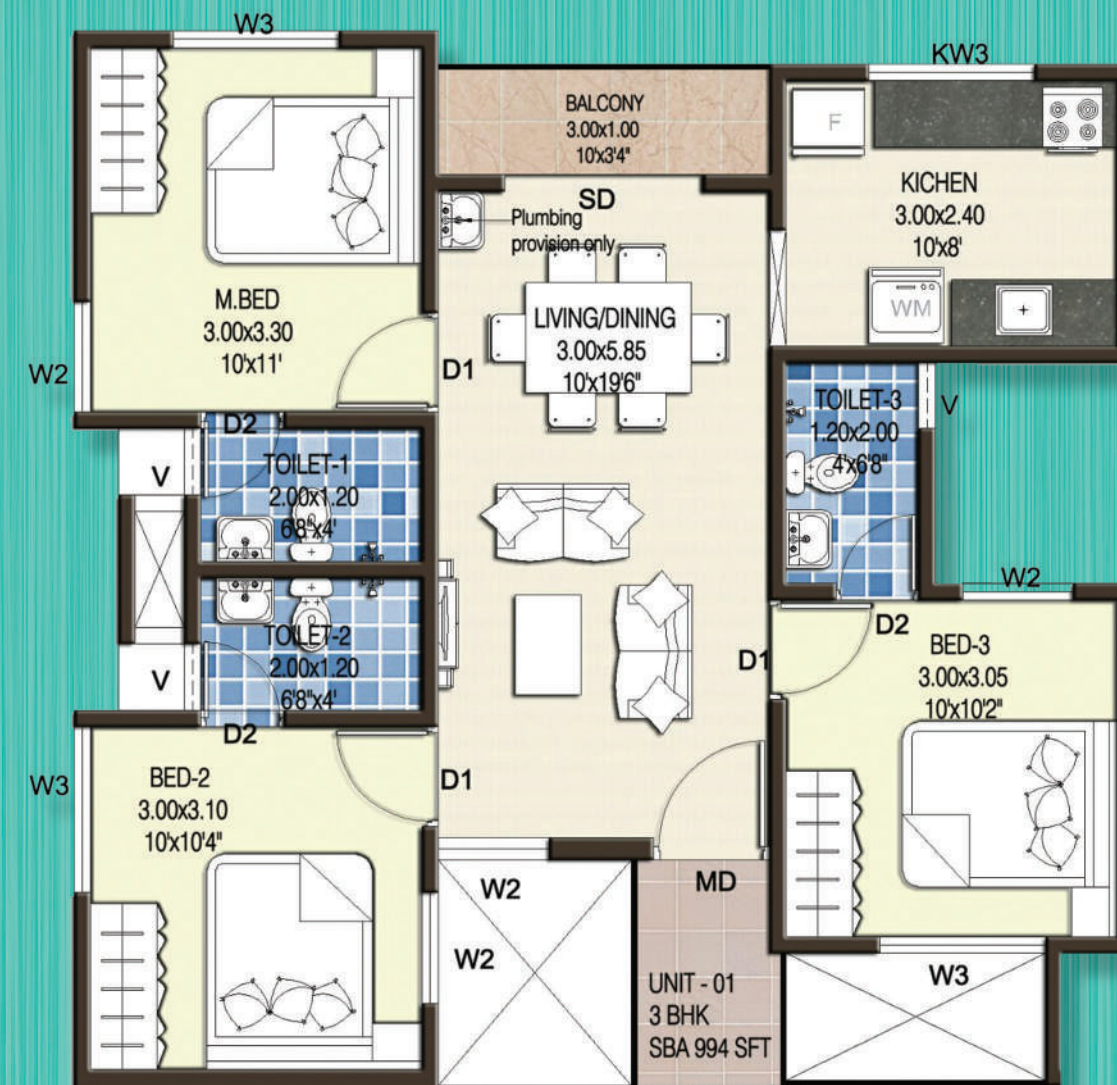


Block A
Individual Floor Plan
Unit- 02,03
2 BHK, 820 SFT



www.confident-group.com

Block A
Individual Floor Plan
Unit- 01,04,05,06,07 & 08
3 BHK, 994 SFT



CONFIDENT
Oberon
LUXURY APARTMENTS
NEAR ALUVA, KOCHI



AMENITIES:

- Swimming pool ● Club house- Multipurpose Gym ● Games room & Party hall
- Kids play area ● Centralised gas system

SPECIFICATIONS

1. Structure: Built on solid foundation, the sturdy framed structure with columns and beams provides a secure frame work for the entire building.
2. Wall: Concrete blocks / bricks protect you from weather elements.
3. Electrical: Concealed conduits with high grade copper wire connections for 24/7 safety and adequate points for power and lighting.
Provision for split A/C keep your apartment at optimum temperature & keeps you cool in the summer heat.
4. Painting (internal walls): Premium emulsion roller finished paint with cheerful colours that add colour to your lifestyle.
5. Painting (internal roof): Premium distemper in white colour.
6. Painting (External): Good quality weather – shielded paints keep your investment look as good as new.
7. Switches: Sophisticated and trendy looking modular /equivalent switches in Confident/equivalent standards that lights your world with joy .
8. Doors (Main Door) : Hardwood door and sparkling stainless steel fixtures with Confident/equivalent branded locks that protect a world of happiness inside.
9. Doors (Internal Doors) :Good quality, sturdy wooden door frame over moulded design shutter with skin, functionality and style as its main attractions.
10. Windows: Latest trend high quality aluminium windows with 4mm thick Plain head glass allows maximum utilisation of natural light.
11. Flooring: Vitrified tiles for living,dining,and bedrooms. Kitchen and toilet flooring with good quality ceramic tiles. Elegant granite tiles for common area flooring.
12. Dado tiling: 2 feet & 7 feet high well adorned glazed dado tile in kitchen & toilets respectively makes maintenance and cleaning a breeze.
13. Sanitary Fixtures: Hindware/Confident/Cera/equivalent sanitary fixtures complement the rest of your dream home .
14. CP Fittings: Convenient and fashionable top of the line chromium plated tap fittings for bathrooms and kitchens in Confident/Equivalent brands.
15. Cooking Platform: Classy granite slab /Latest artificial material for cooking platform, having trendy Stainless Steel sink with drain board.
16. Water supply: Underground and overhead storage tanks of suitable capacity in addition to water source from captive well means no more water worries.
17. Sewage System: Safe,environment friendly Sewage Treatment Plant (STP) for apartments that are harmonious with its surroundings.
18. Centralised Gas Connection :Centralised Gas Connection will provide a safe and hazard free environment in your dream home.
19. Provision for Invertor.
20. Generator backup for common area and lifts.



Location Map

DISTANCE TO MAJOR LOCATIONS

| | |
|------------------------------|---------|
| NH 47 | 3.8 Km |
| Proposed Aluva Metro Station | 4.2 Km |
| Railway Station | 5.5 Km |
| Kalamassery | 9.0 Km |
| International Airport | 14.0 Km |
| Edapally Jn./ Lulu Mall | 14.5 Km |

NATURAL WATER
AVAILABLE IN
ABUNDANCE

ECO-FRIENDLY
ATMOSPHERE

IDEAL FOR
AN INVESTMENT