



HIGHEST QUALITY

**CORPORATE OFFICE: BANGALORE**

Confident House, 4, BTM Ring Road, 1st Stage BTM Layout, Bangalore- 560 068, Ph: +9180 4011 3333, +91 99 161 13333  
E-mail: sales@confident-group.com

**KOCHI**

Confident House, 868/2,  
S A Road, Vyttila,  
Kochi- 682 019,  
Ph: +91 484 4093333,  
+91 98959 04444,  
+91 98959 14444

**THRISSUR**

Confident House,  
11/605, Mathrubhumi Jn.,  
Veliyannur (PO), Thrissur- 680 021  
Ph: +91 487 2421407,  
+91 974616 4444,  
+91 975617 4444

**TRIVANDRUM**

Confident Group,  
TC 13/1151 (7), Kannammoola,  
Medical College P.O, 695 011  
Ph: +91 471 4083333,  
+91 98955 13333  
+91 98955 23333

**CALICUT**

Confident House, 28/975,  
Thondayad Bypass Jn.,  
Calicut- 673 017  
+91 8129 32 1111  
+91 495 309 3333

**MUMBAI**

No. 1038, 1st Floor,  
Heera,Panna Shopping Mall,  
Opp. NTPC Residential Complex,  
Mumbai-400076  
Ph: +91-9702788111

**UAE**

Confident House,  
103, Oriental House- 1,  
Bank Street, Burdubai,  
Dubai, PO Box- 31599  
Ph: +971 43977747

**USA**

1 Cragwood Road,  
Suite 103A, South Plainfield  
New Jersey 07080  
Ph: +1 9145731616,  
+1 215876 7319



**THE BEST HOUSING BRAND OF KERALA**

This Brochure is purely conceptual and does not constitute a legal offering. The promoters/developers reserve the right to alter / delete / add specification or design mentioned herein.

**CONFIDENT**  
**Symphony**  
2 & 3 BHK LUXURY APARTMENTS  
**ALUVA**



**LIVE  
AN  
EASY  
METRO  
LIFE**



## THE LIFE IN A METRO

A dream of many, but rarely fulfilled. But what more could be asked if one has not only easy access to the metro facilities & NH 47 but also a proud living space right in the middle of it ? Confident Group presents Confident Symphony, the luxury apartment project adjacent to the metro rail station in Pulinchode, near Aluva. Here, luxury is uncompromised and convenience never-ending.



## PROMISE OF CONFIDENCE!

Confident Group is a rapidly growing international conglomerate headquartered in Bangalore with operations in Kochi, Trivandrum, Thrissur, Calicut, Mumbai and overseas. From Infrastructure to Hospitality, Aviation, Entertainment, Education, Healthcare and Lifestyle Confident Group has showed the much discerning spirit and delivered in all means with quality. Confident Group always kept promises and is the No. 1 selling brand in Kerala and Karnataka.

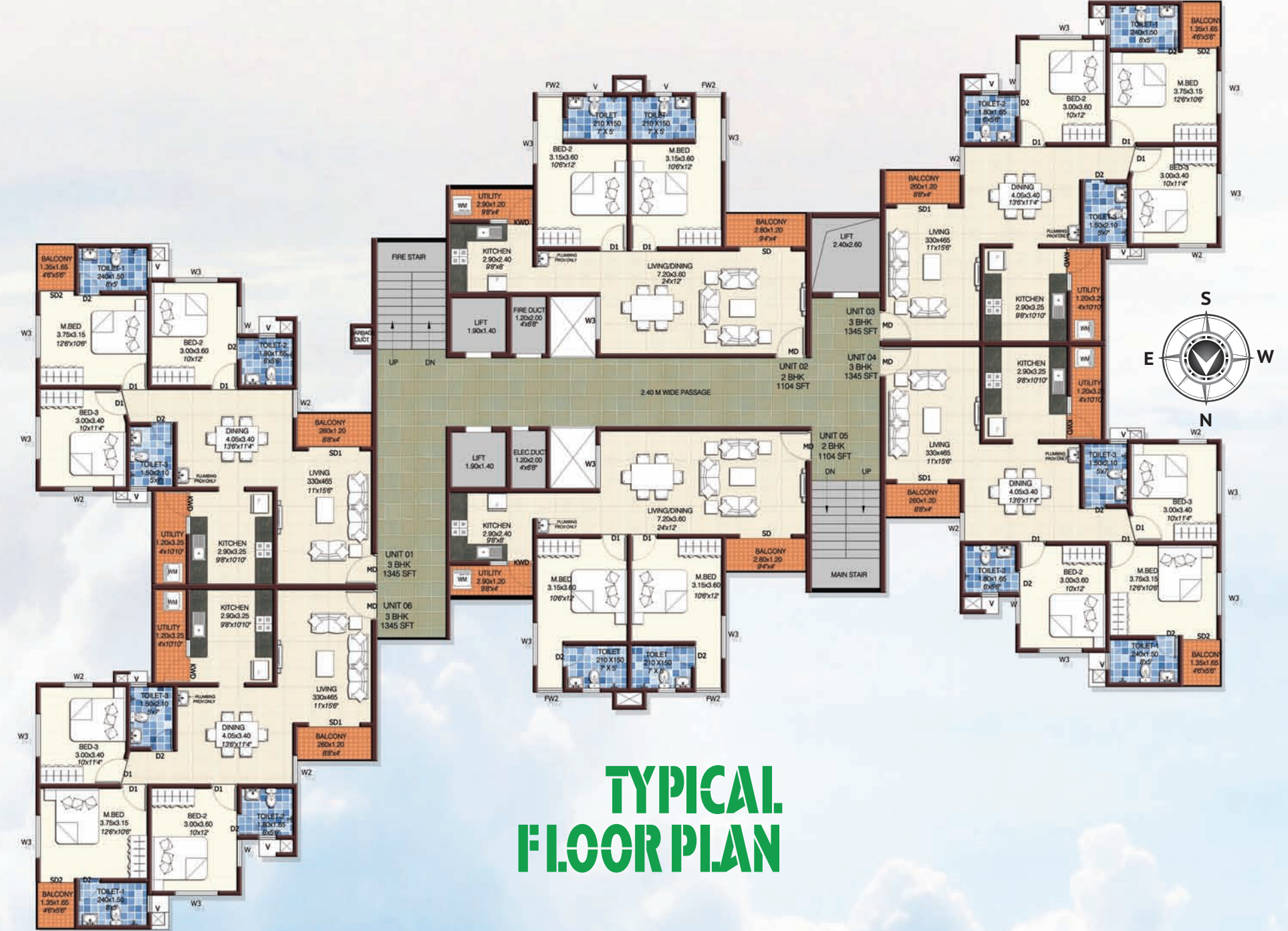
[www.confident-group.com](http://www.confident-group.com)

## ON THE RIGHT NOTE.

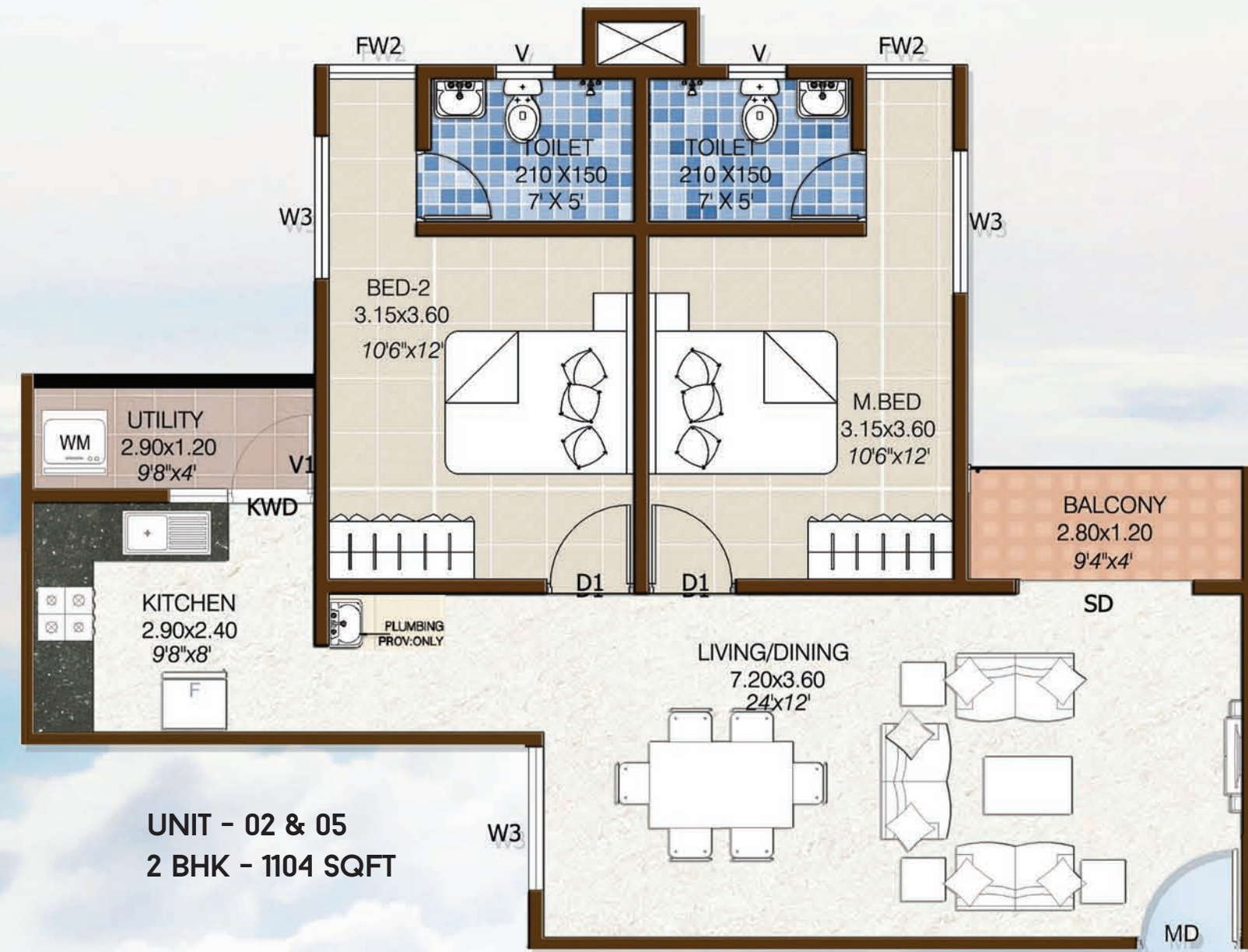
Let the beauty of river Periyar wake you up with its refreshing spirit and tranquility in the air embrace you. Enjoy the aura of peace retained exclusively for you at Confident Symphony. Available in 2 & 3 BHK formats, Confident Symphony accommodates all luxury features that fit your needs. The effortless connectivity to National Highways, Metro Station, Airport, Schools, Professional Colleges, and other necessities add to the glamour of Confident Symphony. Here, everything is on the right note and so will be your life.













## 13<sup>TH</sup> FLOOR PLAN





AMENITIES

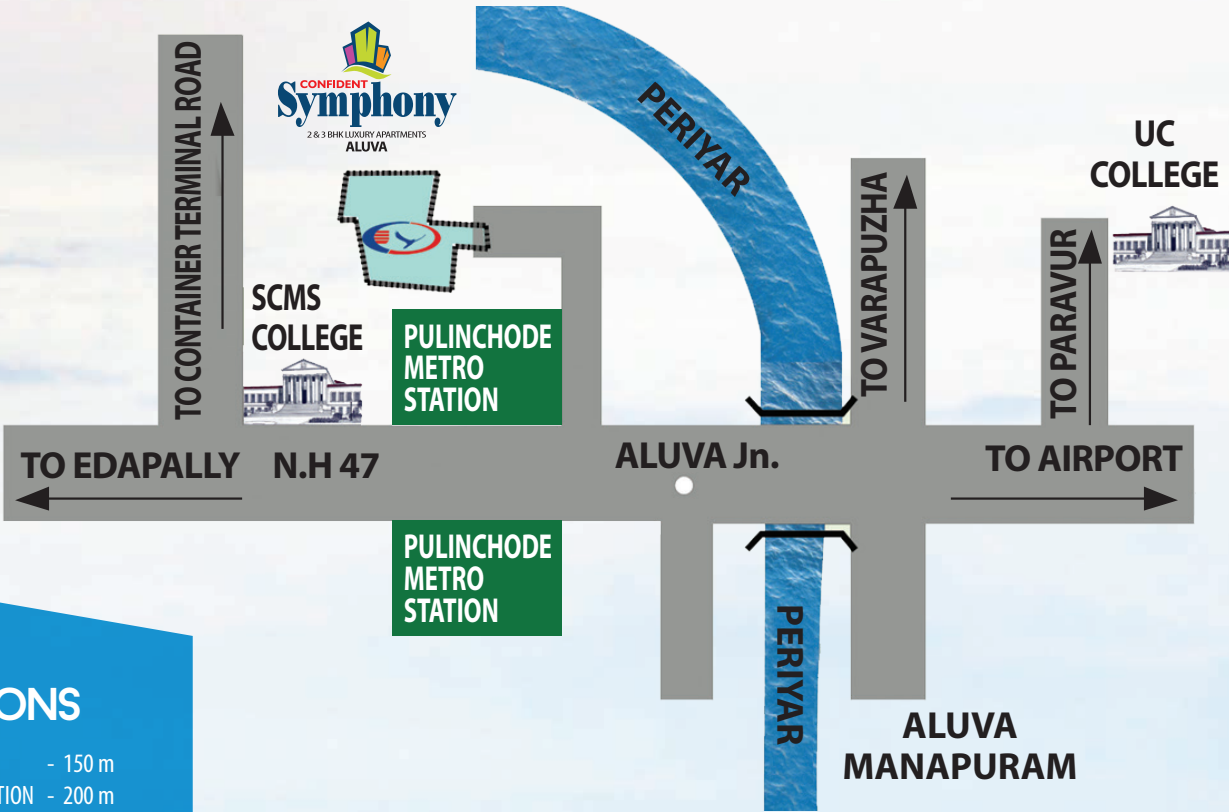
- CONFERENCE ROOM
- MULTI PURPOSE GYM
- VISITORS LOBBY
- SERVANTS/DRIVERS TOILET
- GAMES ROOM
- TABLE TENNIS
- SWIMMING POOL
- CENTRALISED GAS SYSTEM
- BROADBAND
- INTERCOM FACILITY
- SECURITY ALARM
- 24 HOURS SECURITY
- 1 KVA POWER BACK UP FOR EACH FLAT
- KIDS PLAY AREA
- VISITORS CAR PARK
- ON CALL MAINTENANCE
- AUTOMATED SHOE SHINE FACILITY
- AC PARTY HALL

SPECIFICATIONS

1. Structure:- Built on solid foundation, the sturdy framed structure with columns and beams provides a secure frame work for the entire building.
2. Wall:- Concrete blocks/bricks protect you from the nature's weather elements.
3. Electrical:- Concealed conduits with high grade copper wires connections for 24/7 safety and adequate points for power and lighting. Provision for split A/C keep your apartment at optimum temperature, keep you cool in the summer heat.
4. Painting (Internal walls):- Premium emulsion roller finished paint with cheerful colours that add colour to your lifestyle.
5. Painting (Internal roof):- Premium distemper with matching white colour.
6. Painting (External):- Good quality weather – shielded paints keep your investment looking as good as new.
7. Switches:- Sophisticated and trendy looking modular /equivalent switches in Confident/equivalent standards that lights your world with joy.
8. Main door:- Jacsons or Equivalent Moulded 4 Panel Skin door.  
Internal doors:- Jacsons or Equivalent Moulded 2 Panel Skin door.  
Toilet doors:- Jacsons both side laminated flush door with 4 side PVC lipping.
9. Windows:- Latest trend high quality aluminium windows with 4mm thick plain headed glass allows maximum utilisation of natural light.
10. Flooring:- Vitrified tiles for living,dining,and bedrooms. Kitchen and toilet flooring with good quality ceramic tiles. Elegant granite tiles for all the common area flooring.
11. Dado tiling:- 2 feet height & 7 feet height well adorned glazed dado tile in kitchen, toilets respectively makes maintenance and cleaning a breeze.
12. Sanitary Fixtures:- Cera or Equivalent sanitary fixtures complement the rest of your dream home.
13. CP Fittings:- Convenient and fashionable CERA or Equivalent fittings for bathrooms and kitchens.
14. Cooking Platform:- Classy granite slab /Latest artificial material for cooking platform, having trendy Stainless Steel sink with drain board.
15. Water Supply:- Underground and overhead storage tanks of suitable capacity in addition to water source from captive well means no more water worries.
16. Sewage System:- Safe,environment friendly Sewage Treatment Plant (STP) for apartments that are harmonious with its surroundings.
17. Centralised Gas Connection:- Centralised Gas Connection will provide a safe and hazard free environment in your dream home.
18. Intercom Facility:- The facility helps to make the community united.



LOCATION MAP



DISTANCE TO MAJOR LOCATIONS

- |                                   |            |
|-----------------------------------|------------|
| N.H 47                            | - 150 m    |
| PROPOSED ALUVA METRO RAIL STATION | - 200 m    |
| HOSPITAL                          | - 500 m    |
| TEMPLE, MOSQUE, CHURCH            | - 500 m    |
| KAROTHUKUZZHI HOSPITAL            | - 1.50 km  |
| ALUVA RAILWAY STATION             | - 2.00 km  |
| ALUVA BUS STAND                   | - 2.00 km  |
| SCMS SCHOOL OF ENGINEERING        | - 4.00 km  |
| KALAMASSERY JN.                   | - 5.00 km  |
| LULU MALL / EDAPPALLY JN.         | - 9.00 km  |
| COCHIN INTERNATIONAL AIRPORT      | - 13.00 km |
| INFO PARK                         | - 14.00 km |

