

Zenith

Near Karyavattom
Trivandrum

EXPLORE THE SERENITY,
ENJOY THE LIFE.



Explore
The charm of nature



Zenith

Near Karyavattom
Trivandrum

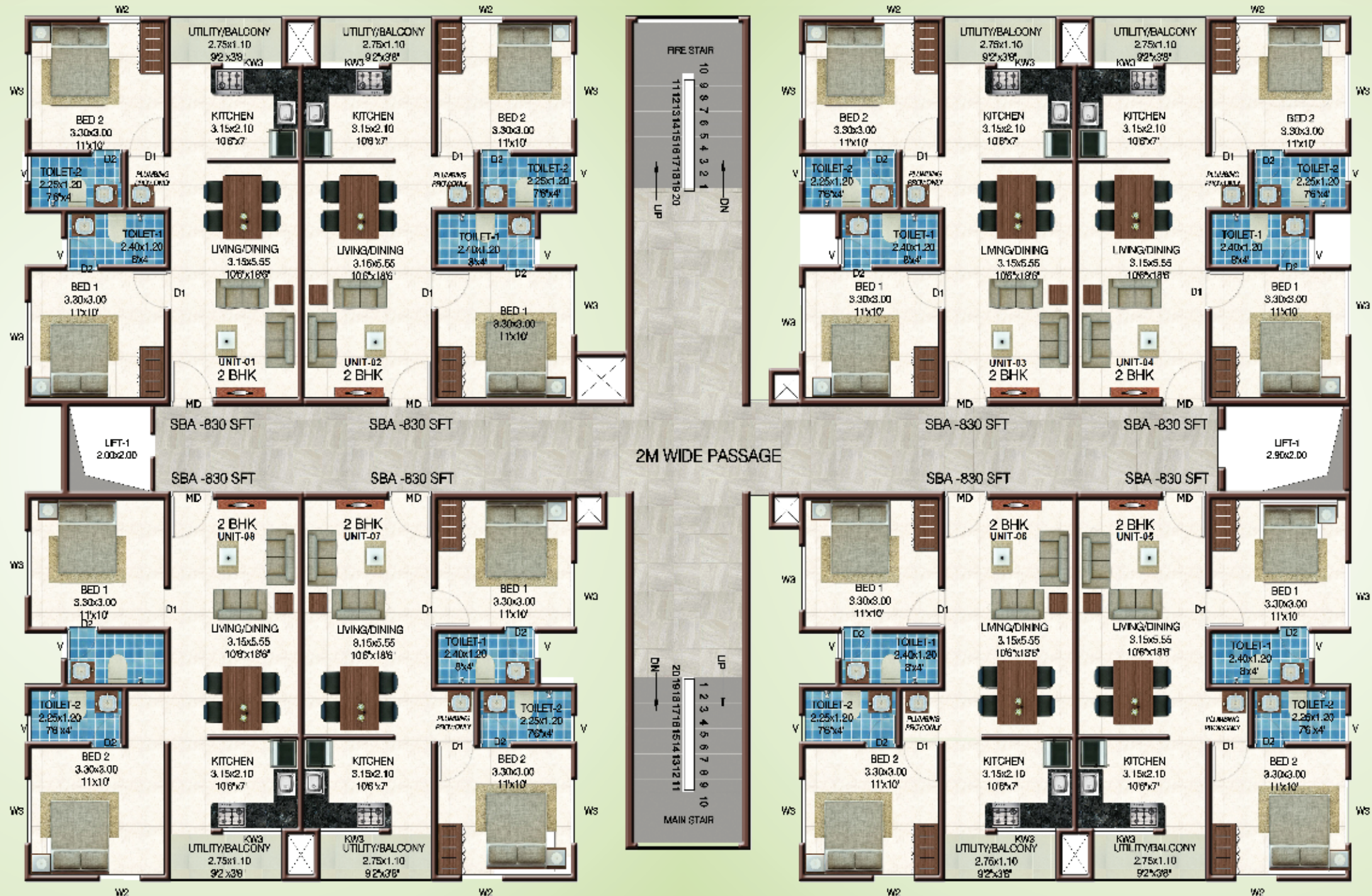
Design, atmosphere & budget. Prior to buying a dream home these are some of the priorities in everyone's mind. "Smile Homes", a venture launched by Confident group is providing these unique features while making your dream come true.

In the heart of Trivandrum at Kariavattom, which is gaining much attention with its development and world class facilities, Smile Homes is coming up with a reason to Smile. Confident Zenith Apartments is an abode of modern living and there are more for you to smile about it!

Location Map



Nestled between Sreekaryam and Pothencode at Chenkottukonam, Zenith is fairly close to Technopark, Technocity, upcoming Lulu Mall, KIMS Hospital, reputed schools, other hospitals and places of worship.



Typical Floor Plan 1st to 10th



Typical Floor Plan 11th Floor



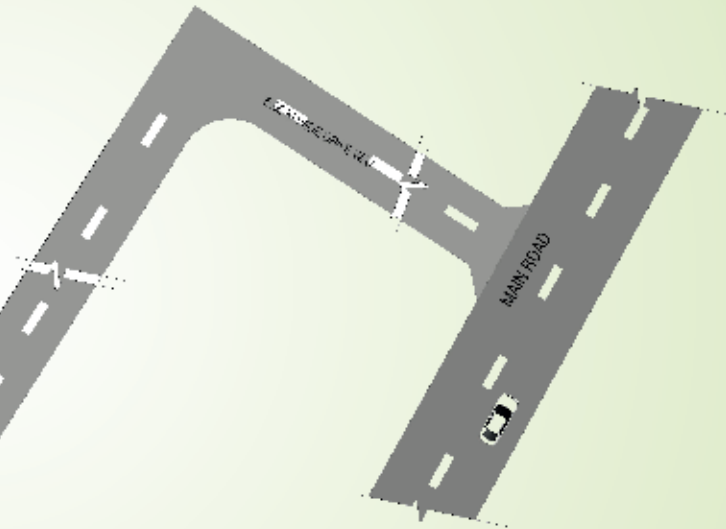
1 BHK, SBA - 640 SFT



2 BHK, SBA -830 SFT



Layout Plan



Amenities

- PARTY HALL • MULTIPURPOSE GYM • KID'S PLAY AREA • 24 HOURS SECURITY
- GAMES ROOM • RECEPTION AREA • INTERCOM FACILITY FOR COMMON AREA & SECURITY CABIN
- SECURITY CABIN • CCTV IN STRATEGIC POINTS • CENTRALISED GAS SUPPLY
- 1KVA POWER BACK UP FOR EACH FLAT.

Specifications

Structure: Built on solid foundation, the sturdy framed structure with columns and beams provides a secure frame work for the entire building.

Wall: Concrete blocks/bricks protect you from the nature's weather elements.

Electrical: Concealed conduits with high grade copper wires connections /FR Cables-Finolex/RR or equivalent brands for 24/7 safety and adequate points for power and lighting.

A/C provision (dummy) for all bedrooms keeps your apartment at optimum temperature, keep you cool in the summer heat.

Painting (Internal Walls): Premium emulsion roller finished paint with cheerful colours that add colour to your lifestyle (Asian or equivalent brands).

Painting (Internal Roof): Premium distemper in white colour.

Painting (External): Good quality weather - shielded paints keep your investment looking as good as new (Asian or equivalent brands).

Switches: Sophisticated and trendy looking modular Le grand or equivalent standard switches with 5 year warranty that lights your world with joy.

Doors (Main Door): -Hardwood Frame with Skin door and sparkling stainless steel fixtures with Godrej/Dorset/equivalent branded locks with 5 year warranty that protect a world of happiness inside.

Doors (Internal doors) :- WPC Frame with Skin shutter for bedroom doors and toilet doors in WPC frame with laminated shutter

Windows: Latest trend high-quality aluminum windows with 4mm thick plain head glass allows maximum utilization of natural light.

Flooring: Johnsons/Cera/Equivalent Vitrified tiles for living, dining and bedrooms. Kitchen and toilet flooring with good quality ceramic tiles. Quality ceramic tiles for all the common area flooring.

Dado Tiling: 2 feet height well adorned glazed dado tile above the kitchen slab from Johnsons/Cera/Equivalent, 7 ft height glazed/Matte finished dado tile in Johnsons/Cera/Equivalent brands in toilets makes maintenance and cleaning a breeze.

Sanitary Fixtures: Hindware/Cera/equivalent sanitary fixtures complement the rest of your dream home.

CP Fittings: Convenient and fashionable top of the line, best quality chromium plated tap fittings for bathrooms and kitchens in Hindware/Cera/equivalent brands with 5 year warranty.

Cooking Platform: Classy granite slab for cooking platform, having trendy Stainless Steel sink without drain board.

Water Supply: Underground and overhead storage tanks of suitable capacity in addition to water source from captive well means no more water worries.

Sewage System: Safe, environment-friendly Sewage Treatment Plant (STP) with ultra filtration plant that are harmonious with its surroundings as per PCB norms.

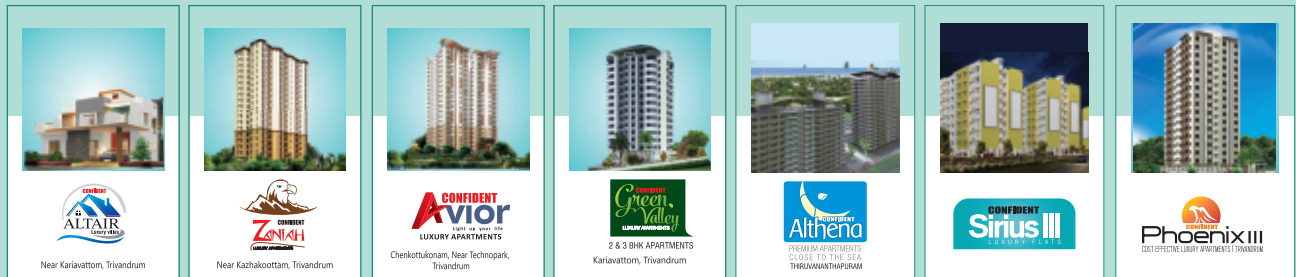
Intercom Facility: Facility with one connection in the common area for each floor, lifts and security cabin. The facility helps to make the community united.

Kitchen: Kitchen with half wall. Customization allowed with toughened glass partition/block work at additional cost.

ONGOING PROJECTS IN TRIVANDRUM



COMPLETED PROJECTS IN TRIVANDRUM



DUBAI
No.12, Unique World
Business, Near Ansar
Gallery Building,
Al Karama, Dubai P.O
Box : 87556
Ph: +971 43977747
+971 551027577

TRIVANDRUM
Confident House
TC 13/1151(7)
Kannammoola
Medical College P.O, 695 011
Ph: + 91 471 4083333
+ 91 98955 23333

KOCHI
Confident House, 868/2
Sahodaran Ayappan Road
Vyttila, Kochi- 682 019
Ph: +91 484 4093333
+ 91 95677 54444

THRISSUR
Confident House, 11/605
Mathrubhumi Jn.
Veliyannur (PO)
Thrissur - 680 021
+91 487 2421407
+91 97461 64444

CALICUT
Confident House
28/975
Thodayad Bypass Jn.
Calicut - 673 017
+91 495 309 3333
+91 81293 21111