

CONFIDENT  
**WHITE HOUSE**  
PREMIUM APARTMENTS  
KALOOR, KOCHI.

*A r r i v e i n S t y l e !*



# Make a Statement. In style.

Life is forever evolving for connoisseurs of fine living, who demand only the best.

For the cognoscenti that you are, you absolutely love to make heads turn, raise a few eyebrows, and leave your shocked peers gasping, with your premium lifestyle statement: a lifestyle that is truly extraordinary, exquisite and exclusive. Just like you.

Confident White House. Premium homes from Lifestyle Plus.

The world is waiting. Come, make a red carpet entry.

## Lifestyle plus

Promoted by Kerala's best architecture minds, Confident Group, Lifestyle Plus is about to set new benchmarks and eyeball-popping landmarks with the launch of their top-of-the-line, aesthetically designed, rich, hi-luxe apartments, villas, townships, and malls at prime locations across Kerala.

Confident White House is our maiden prestigious project from the brand Lifestyle Plus.







# Royale Living Beckons. In style.

CONFIDENT  
**WHITE HOUSE**  
2 & 3 BHK Premium Apartments  
KALOOR, KOCHI.

Soaring 17 storeys (excluding basement and ground) into the aqua-marine blue sky as one of the tallest free-standing structures in the area, Confident White House premium apartments will transform the landscape of Kaloor. A triumphant expression of neo-hi-luxe lifestyle, this premium super-structure is coming up on 91.6 cents of land; 6 apartments on each floor of 100 Lifestyle Plus apartments.

Confident White House is Kochi's new fashionable address for premium living with unobstructed stunning views and impeccable amenities elevated, down to the last detail!



# Designed for an Elevated Lifestyle.

Confident White House offers 2 & 3 BHK condos with the best sun and wind directions and a sweeping view of Kochi. Be it the drawing room which greets you with warmth, grace and open space, the dazzling bath attached bedrooms with balcony, looking every inch inviting or the optimally planned kitchen, Confident White House is aesthetically and meticulously planned to satiate kingly pleasures.

Packed with exclusive and premium amenities, befitting your lifestyle, Confident White House is indulgence at scale. The state-of-art security systems, EV charging provision at each car parking, 2.5 KV power back-up, the private pool for ladies and kids, and a fully equipped gym speaks for itself.





L o c a t i o n   m a p

### Distance to major locations

☞ Greets Public School	100 M	☞ Lisie Hospital	1.8 KM
☞ Supermarket	350 M	☞ Bhavan's Vidya Mandir, Elamakkara	2.2 KM
☞ Mathrubhumi Jn.	400 M	☞ M.G Road	2.2 KM
☞ Church, Temple & Mosque	500 M	☞ Renai Medicity	2.2 KM
☞ Deshabhimani Jn.	600 M	☞ High Court of Kerala	2.9 KM
☞ Kaloor Jn., Metro Station & JN Stadium	750 M	☞ Marine Drive	3.3 KM
☞ Brand New Mall by Pothys	900 M	☞ Chinmaya Vidhyalaya	3.3 KM
☞ Saraswathi Vidyanikethan School, Kaloor	1.3 KM	☞ Don Bosco Senior Secondary School	3.3 KM
☞ Palarivattom	1.7 KM	☞ Lulu Mall, Edappally	3.8 KM

# Staying Connected in Style.



CONFIDENT  
**WHITE HOUSE**  
2 & 3 BHK Premium Apartments  
KALOOR, KOCHI.

Kaloor city's upcoming destination, Confident White House is a hop-skip-jump from Marine Drive, Kadavanthra and Palarivattom. Temples, churches and mosques are just around the corner; also facilitating easy accessibility to top education, shopping and dining destinations.

Strategically located at Mathrubhumi Junction, Kaloor; near Greets Public School, White House is walking distance from Jawaharlal Nehru Stadium Metro Station and Kaloor Metro Station. With Deshabhimani Junction, Ernakulam North, Mammangalam and Elamakkara within close proximity, accessibility to central and major destinations and conveniences are all at an arm's reach!

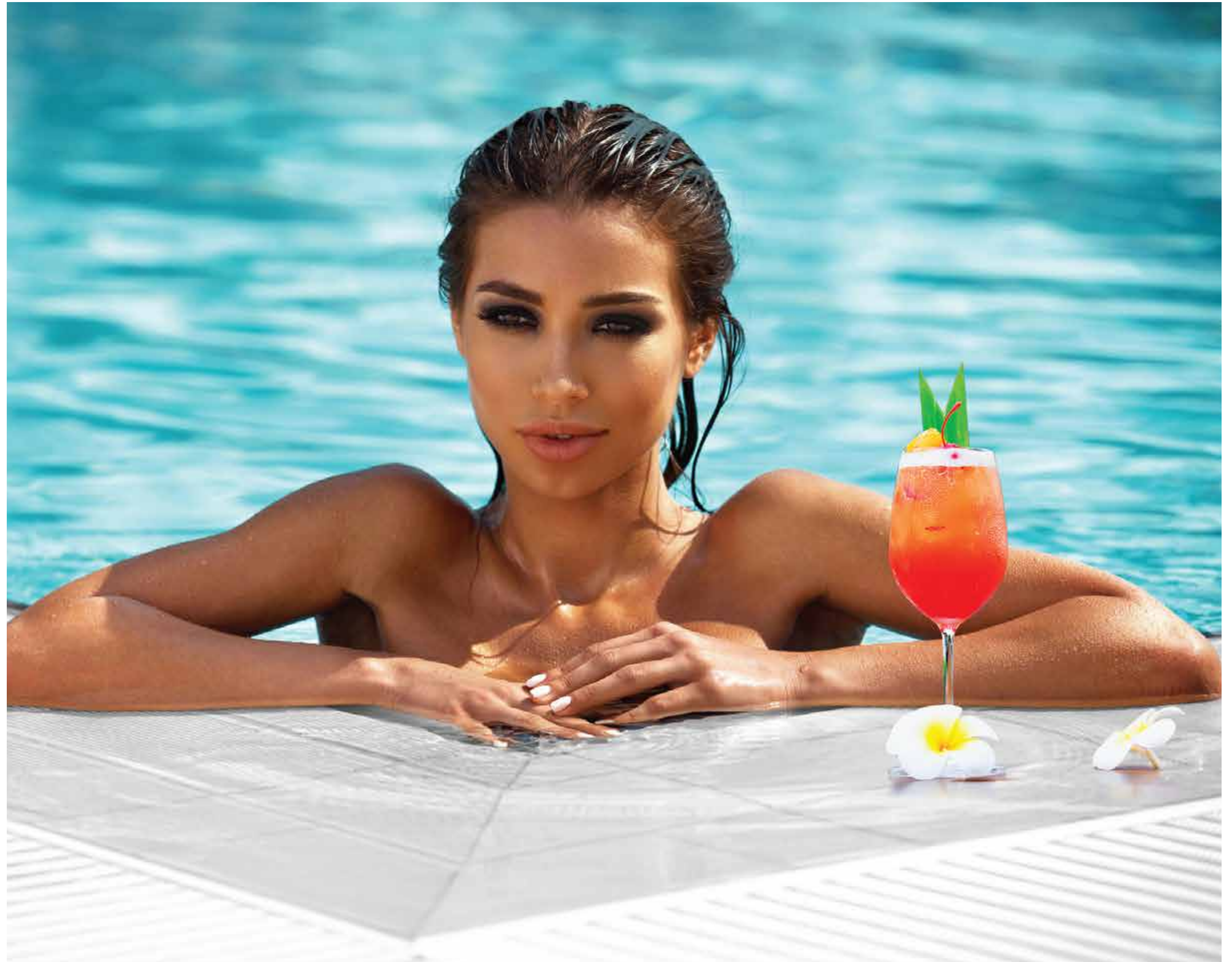




# For the Women of Substance and Style.

Exclusive Roof Top Ladies  
& Kids Swimming Pool,  
with 100% Privacy

Dive into the nature-inspired pools that cleanse your energy inside-out as you take a plunge in, to recharge life and bounce back with renewed vim, vigour and vitality. Everything that a woman of substance and style seeks, we offer at White House with grandiosity. A private pool for women and kids. This will ensure privacy and offer you a safe and private retreat in the milieu of serene seclusion. We understand that you would love to rejoice in solitude, gazing into the infinite horizons of the blue skies as you immerse in the pool of joy. Experience this beautiful union with nature, as your heart triumphs in limitless ecstasy, an exclusive offering of Confident White House.





# Smart, Secure & Futuristic in Style

At Confident White House, nothing is left to chance. We ensure that you and your dear ones are safe and stay connected. Envisioned as futuristic homes, Confident White House comes with smart security systems like 360 degree rotatable two way communication wifi camera with zoom in individual flats for internal surveillance operatable from any part of the world, boom-barrier with remote operation, video-door phone systems in individual flats, electronic door lock for main door in individual flats, EV charger provision in each parking lot and a slew of other lifestyle amenities.

## Lifestyle amenities

- 🏡 Exclusive roof-top swimming pool, with 100% privacy for ladies & kids.
- 🏡 Roof-top swimming pool for gents and kids.
- 🏡 Lobby with posh ambience.
- 🏡 Multipurpose gym.
- 🏡 Airconditioned party hall.
- 🏡 Airconditioned games room.
- 🏡 Air conditioned visitors lobby with access control.
- 🏡 2.5 kva power back up in each flat to run 1 AC (1 ton), Fridge (250w), TV (260w Maximum) & sufficient light & fan (360w) points.



## Lifestyle amenities

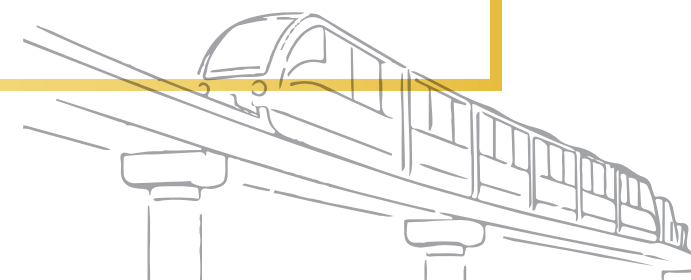
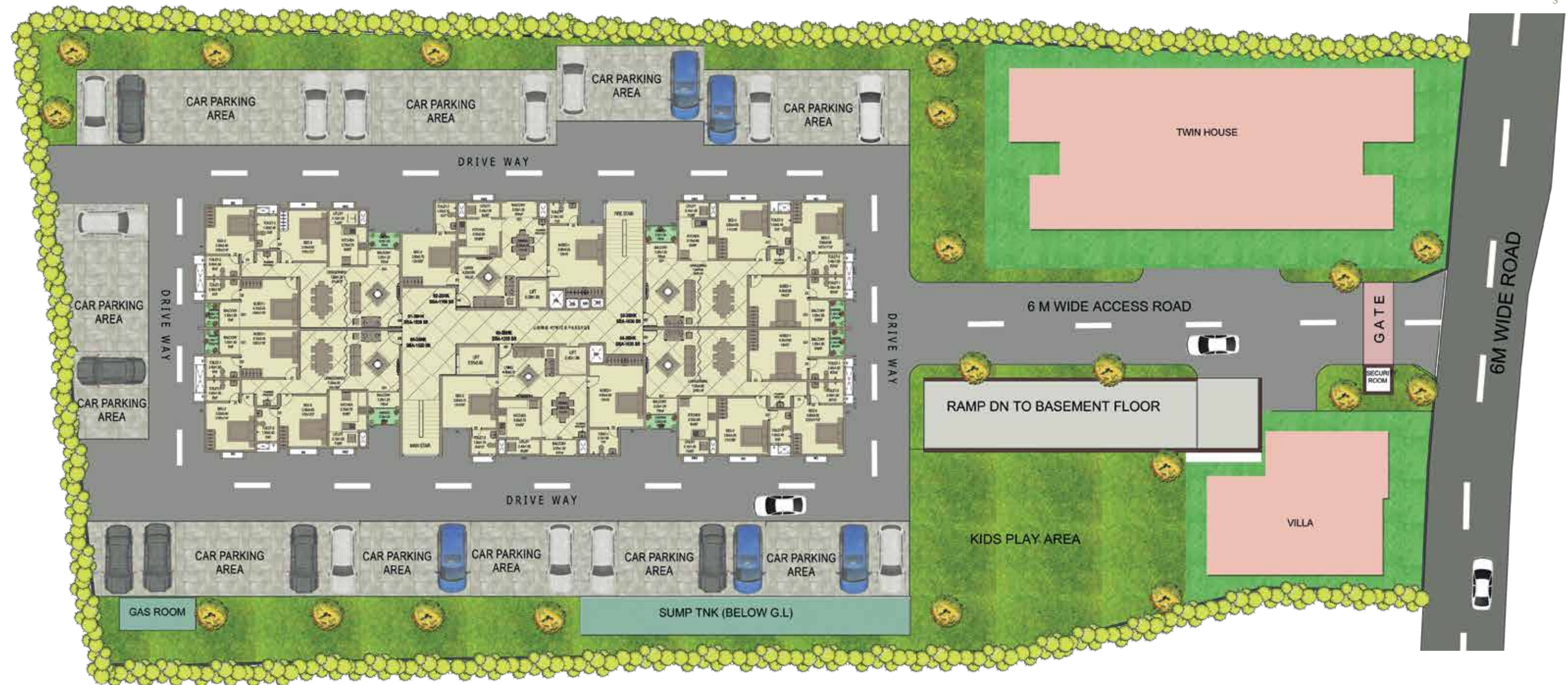
- 🏡 Billiards table.
- 🏡 24 hours security.
- 🏡 Solar power provision for corridor lights.
- 🏡 Kids play area.
- 🏡 Car wash area.
- 🏡 Servants/drivers toilet.
- 🏡 Professional waste management system.
- 🏡 Intercom facility to each flat.
- 🏡 IP CCTV camera in all floors & common areas.
- 🏡 Intrusion Detection System (IDS) for anti-theft monitoring at lobby and main lift area.
- 🏡 Boom-barrier with remote operation at the main gate.
- 🏡 360 degree rotatable two way communication wifi camera with zoom in individual flats for internal surveillance operatable from any part of the world.
- 🏡 Video-door phone systems in individual flats.
- 🏡 Electronic door lock for main door in individual flats.
- 🏡 EV charger provision in each car parking for future.

## Optional automation package for individual apartment at additional cost.

- 🏡 Home automation to have all your appliances and devices at your finger tips - Light & dimming control, climate control, curtain control, fan control, remote access to control your home from anywhere.
- 🏡 Intrusion detection system - To detect unauthorised entry, glass break detection, smoke detection and gas leakage detection.



Layout plan



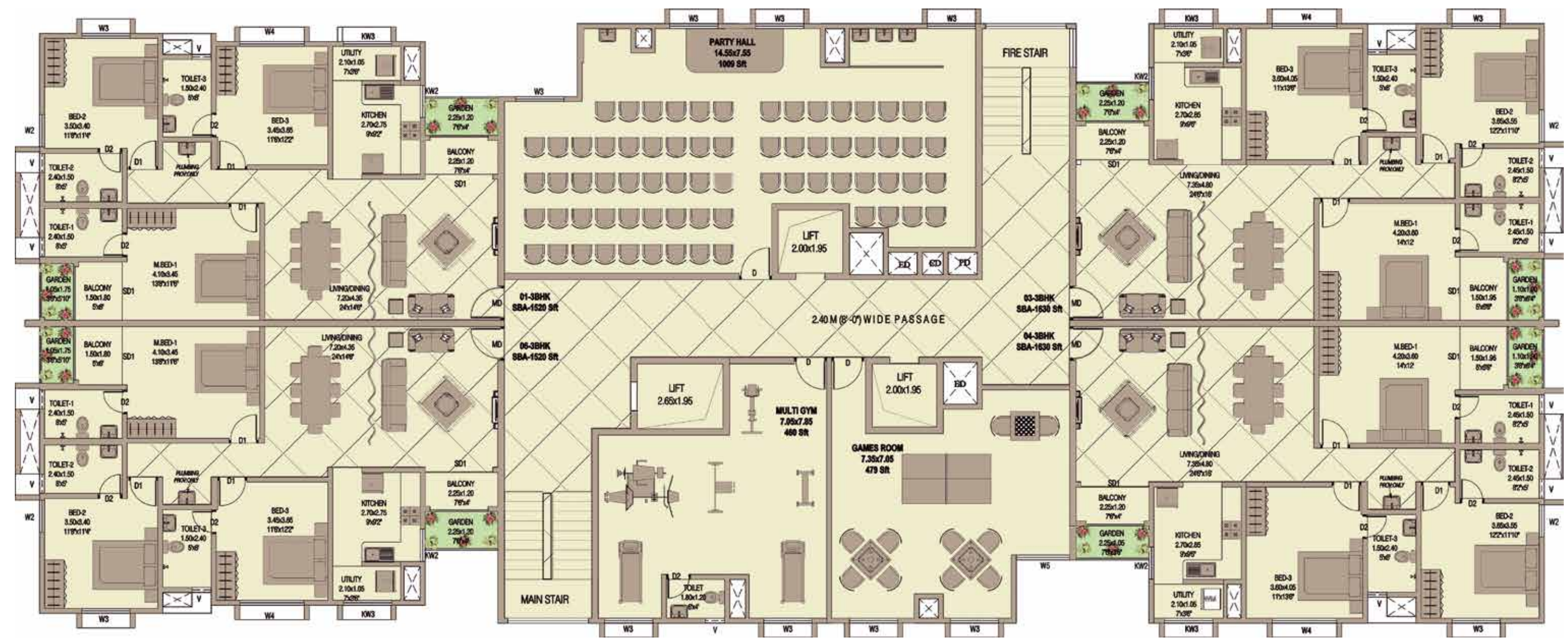


Typical floor plan  
(1st to 16th)



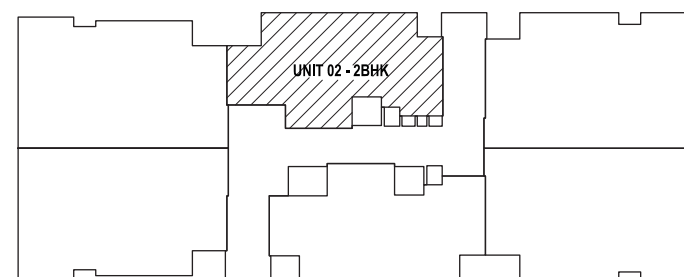
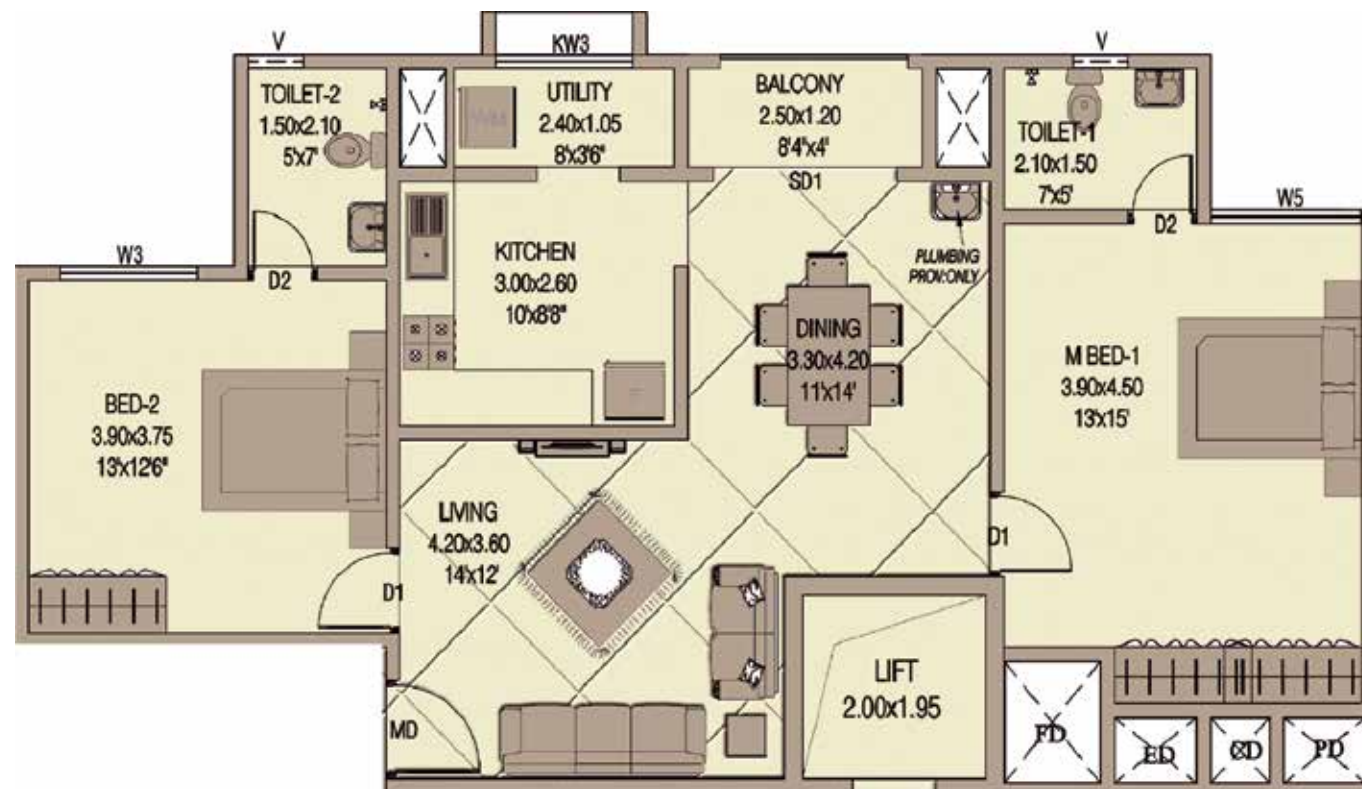


17<sup>th</sup> floor plan

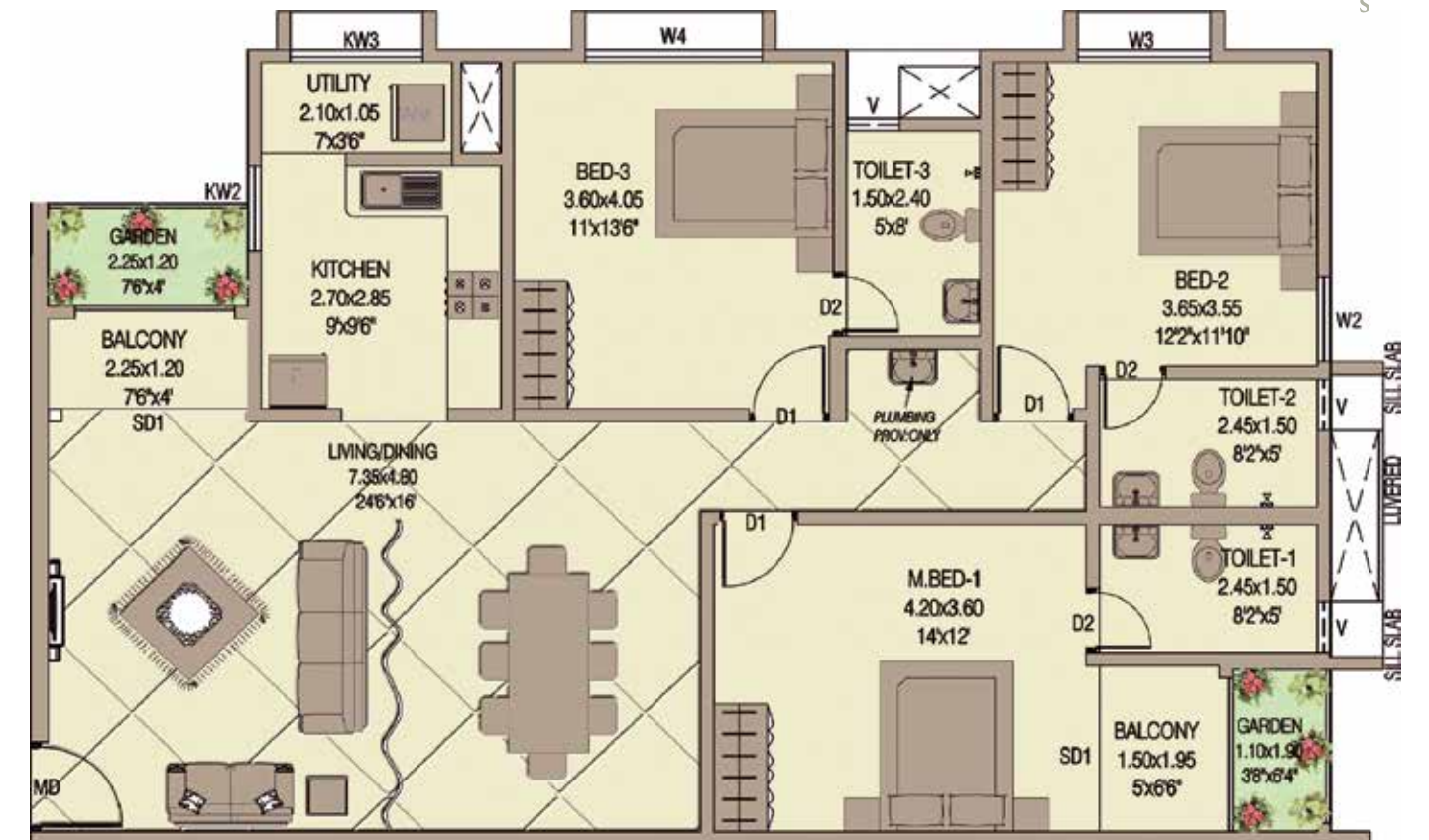




**02 SERIES - 2BHK**  
Carpet area - 868 Sft  
SBA -1166 Sft



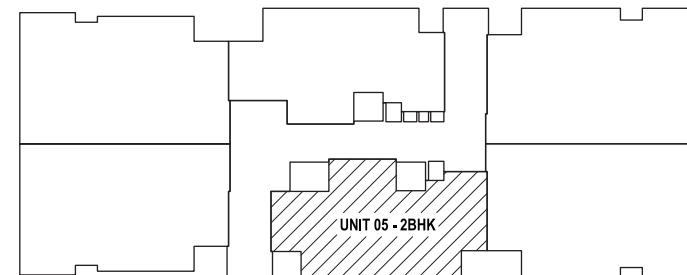
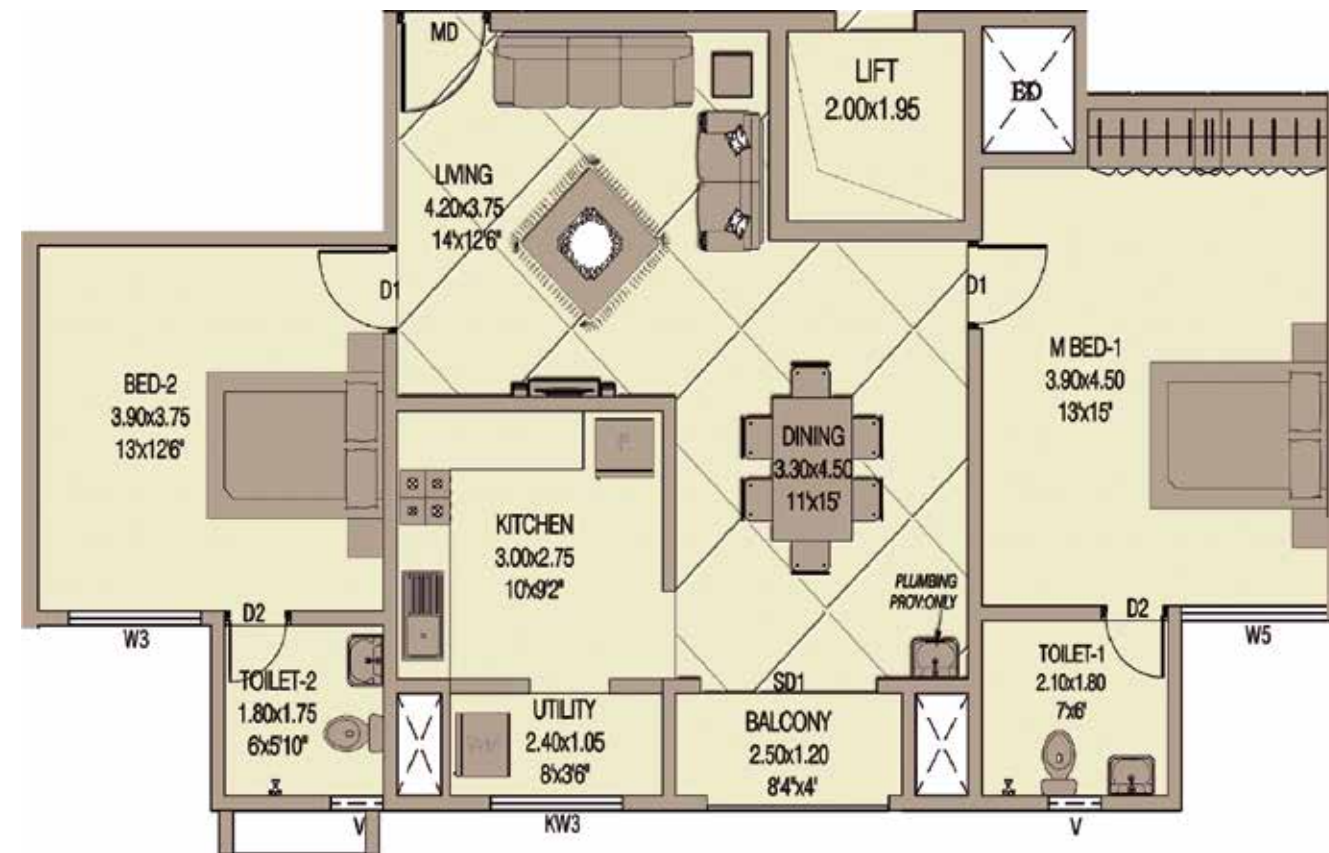
**03 & 04 SERIES - 3BHK**  
Carpet area - 1183 Sft  
SBA - 1630 Sft



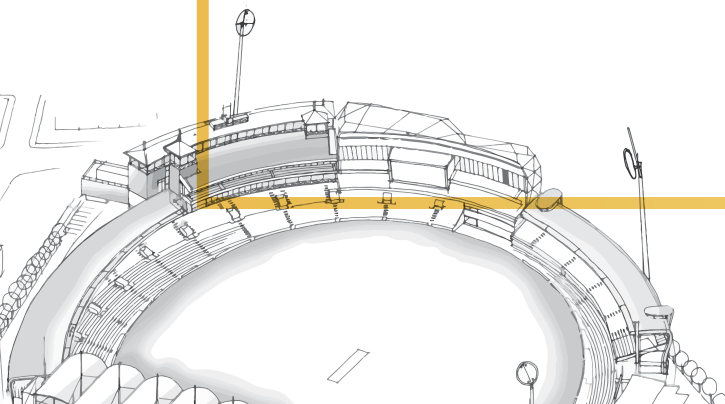
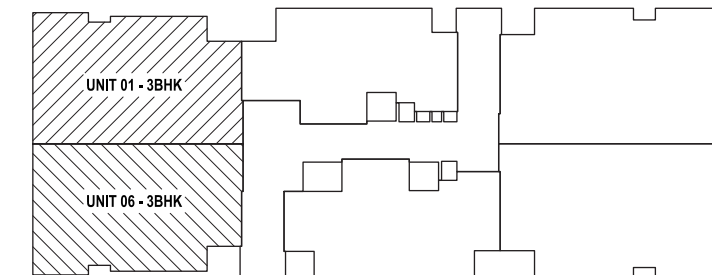
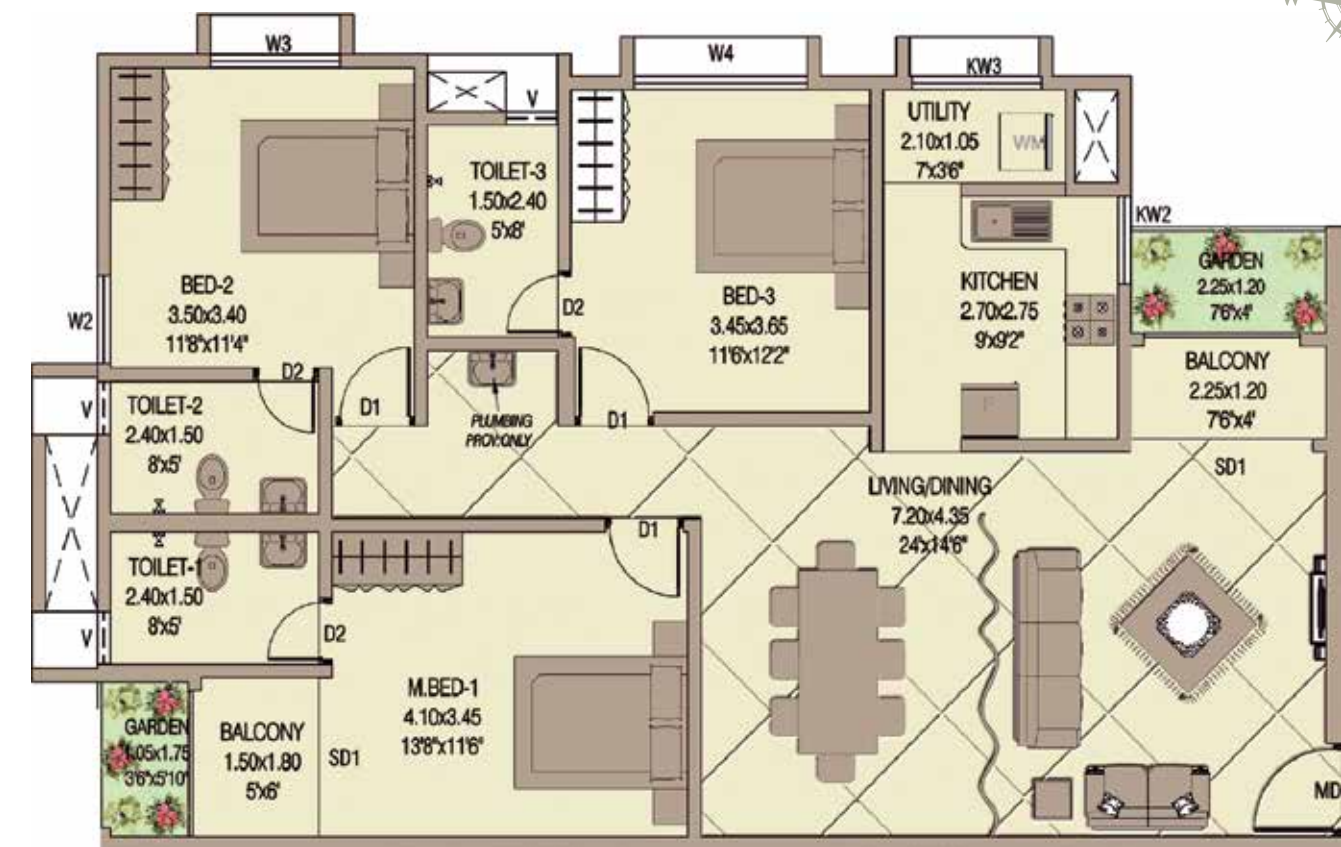




**05 SERIES - 2BHK**  
Carpet area - 900 Sft  
SBA -1205 Sft

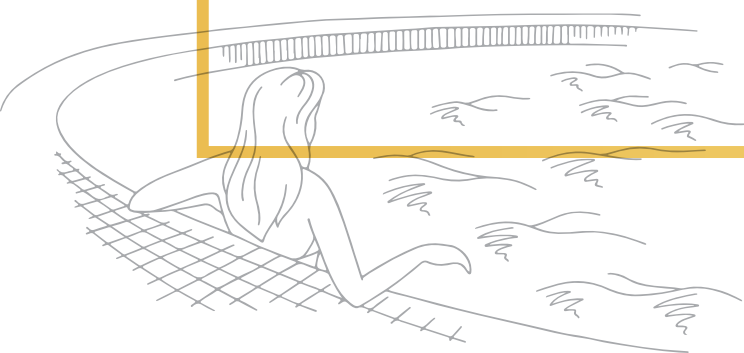


**01 & 06 SERIES - 3BHK**  
Carpet area - 1104 Sft  
SBA - 1520 Sft





Terrace floor plan





# High-class Brands for a Hi-fi Lifestyle.

## Specifications

**Structure:** Built on solid foundation, the sturdy framed structure with columns and beams provides a secure framework for the entire building.

**Wall:** Concrete blocks/bricks protect you from the nature's weather elements.

**Electrical:** Concealed conduits with high grade copper wire connections for 24/7 safety and adequate points for power and lighting for the entire flat.

Provision for Activated split A/C in Living, Dining and all bedrooms keeps your apartment at optimum temperature & keeps you cool in the summer heat. TV & telephone point in Master bedroom & Geyser point in all toilets.

**Painting (internal walls):** Premium emulsion roller finished paint with cheerful colours that add colour to your lifestyle.

**Painting (internal roof):** Premium emulsion in white colour.

**Painting (External):** Good quality weather – shielded paints keep your investment looking as good as new.

**Switches:** High end, Sophisticated and trendy looking modular / equivalent switches in Legrande/equivalent standards that light your world with joy.

**Doors (Main Door):** Teakwood frame with Teakwood panelled door with Electronic Locks that protect a world of happiness inside.

**Doors (Internal Doors):** Good quality Veneer shutter with functionality and style as its main attractions. Toilet door: WPC frame with laminated shutter



## Specifications

**Windows:** High quality UPVC windows with 4mm thick plain glass allows maximum utilisation of natural light.

**Flooring:** Premium quality Johnson/Cera/equivalent Vitrified tiles (for Living, Dining and Bedrooms. Kitchen and toilet flooring with Premium quality Non-skid ceramic tiles.

Quality Non skid Vitrified tiles with border and skirting for all the common area flooring.

Flooring in Living, Dining, Kitchen and toilets with Spacer & Epoxy to give a classy look.

**Dado tiling:** 2 feet height & 7 feet height well adorned glazed dado tile in kitchen, toilets respectively makes maintenance and cleaning a breeze.

**Sanitary Fixtures:** Toto/Grohe/equivalent brand sanitary fixtures complement the rest of your dream home. Wall mounted EWC for toilets. Table top wash basin in Master Bedroom and dining area and wash basins with half pedestal in other toilets for a posh ambience.

**CP Fittings:** Convenient and fashionable top of the line, best quality chromium plated tap fittings for bathrooms and kitchens in Toto/Grohe/equivalent brands. Plumbing provision for Water Purifier in Kitchen.

**Cooking Platform:** Classy granite slab /Latest artificial material for cooking platform, having trendy Stainless Steel sink with drain board.

**Water supply:** Underground and overhead storage tanks of suitable capacity in addition to water source from captive well . Reverse Osmosis (RO) plant for drinking water means no more water worries.

**Sewage System:** Safe, environment friendly Sewage Treatment Plant (STP) with Ultra Filtration plant as per PCB norms that are in harmony with its surroundings.

**Centralised Gas Connection:** Centralised Gas Connection will provide a safe and hazard free environment in your dream home. Provision for piped City Gas connection in future.





*The Best Housing Brand of Kerala*

Confident House, 868/2  
S A Road, Vytilla P O, Kochi – 682 019  
Tel: +91 98959 14444

adsyndicate

Trivandrum	Thrissur	Calicut	Kottayam	Bangalore	UAE
Confident House TC 13/1151(7), Kannammoola, Medical College P O, Trivandrum – 695 011 Tel: +91 989552 3333	Confident House, No: 11/605, Mathrubhumi Junction, Veliyannur P.O, Thrissur- 680021. Tel: 0487-2238000	Confident House Bulding No 29/2241 3rd Floor, Karimbanakkal Building Thondayad By Pass Nellikode, Kozhikode – 673016 Tel: 0495-3093333	Confident Projects #206, Mannakulathil Towers LBS Road Collectorate P O Kottayam - 686002 Tel: 0481 - 2943333	Confident Projects Office Confident Propus, #6 Langford Town, Hosur Main Road Bangalore - 560025 Tel: +91 99161 46482	No.292, Unique World-Business center Near Ansar Gallery Building, Al Karama, Dubai, P.O. Box: 87556 Tel: +971 553387577