

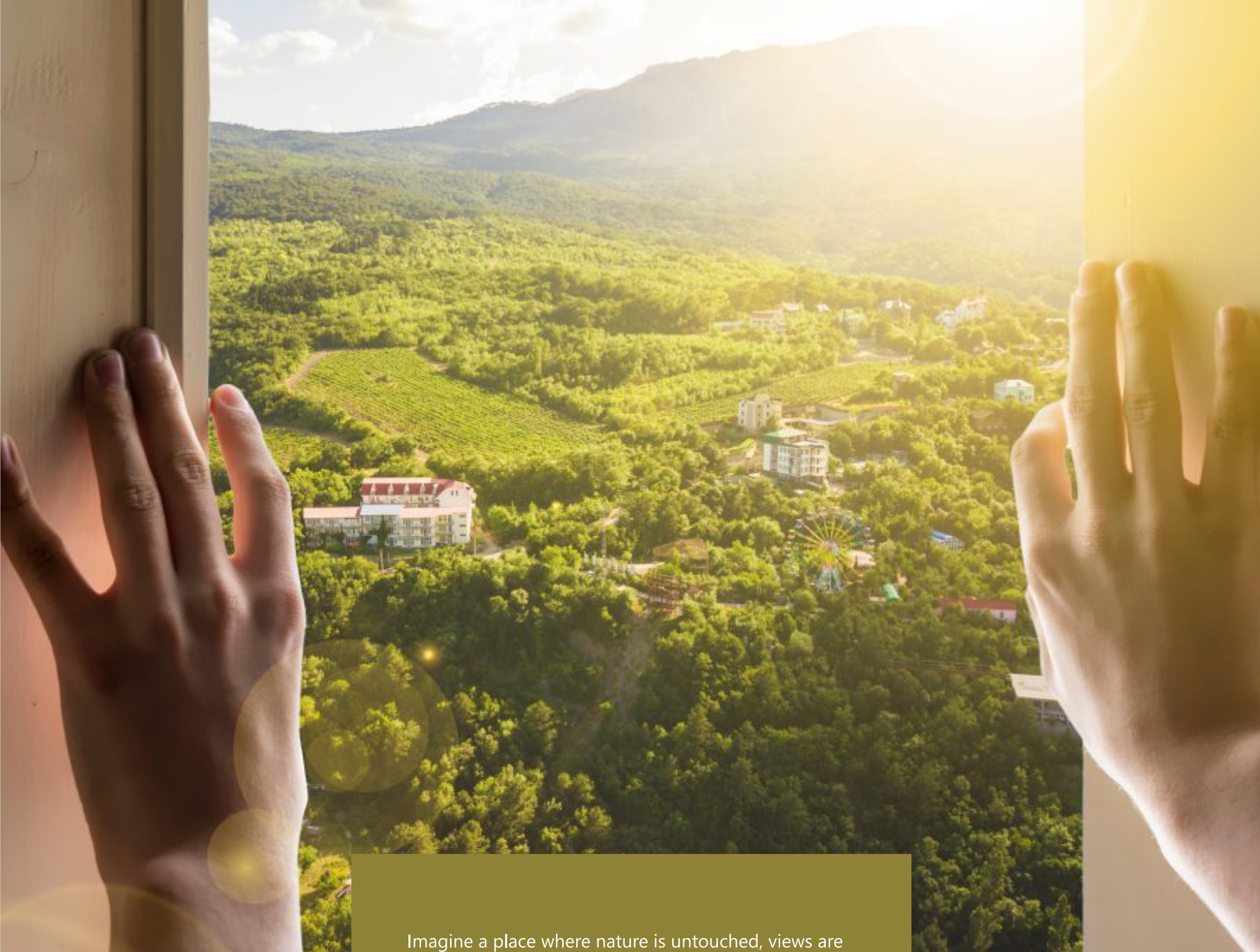


Experience  
the unimagined.

# Unimagined home



K-RERA/PRJ/287/2020



Imagine a place where nature is untouched, views are flawless and excitement is palpable. Imagine a life in this beautiful heaven, embracing nature from all the sides. Isn't it fascinating? If you are ready for this enduring living experience, then Confident Greenwich invites you to live a life above your imagination.

In 13 floors, this project offers you efficiently designed 2 and 3 BHK luxury apartments. Moreover, each home at Greenwich promises a great amount of privacy to ensure your comfort and happiness.

# Unimagined *life*



Located near Thondayadu Jn., Calicut - this unique residential property opens up doors to countless possibilities. This green neighbourhood offers you easy connectivity to schools, hospitals, shopping centres and restaurants. Don't worry about safety, Greenwich offers your family complete protection round-the-clock.

**Distance to major locations**

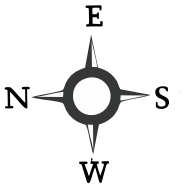
- Bypass - 800 meters
- Cyber Park - 1.4 kms
- Major Schools - 1.5 to 3.5 kms radius
- Major Hospitals - 2 to 3.5 kms radius
- Church, Mosque, Temple - 1 to 2 kms radius
- Govt. Medical College - 3 kms
- New Bus Stand - 5.5 kms
- Railway Station - 7 kms
- Beach - 8 km
- Intl. Airport - 23 Kms



Location map

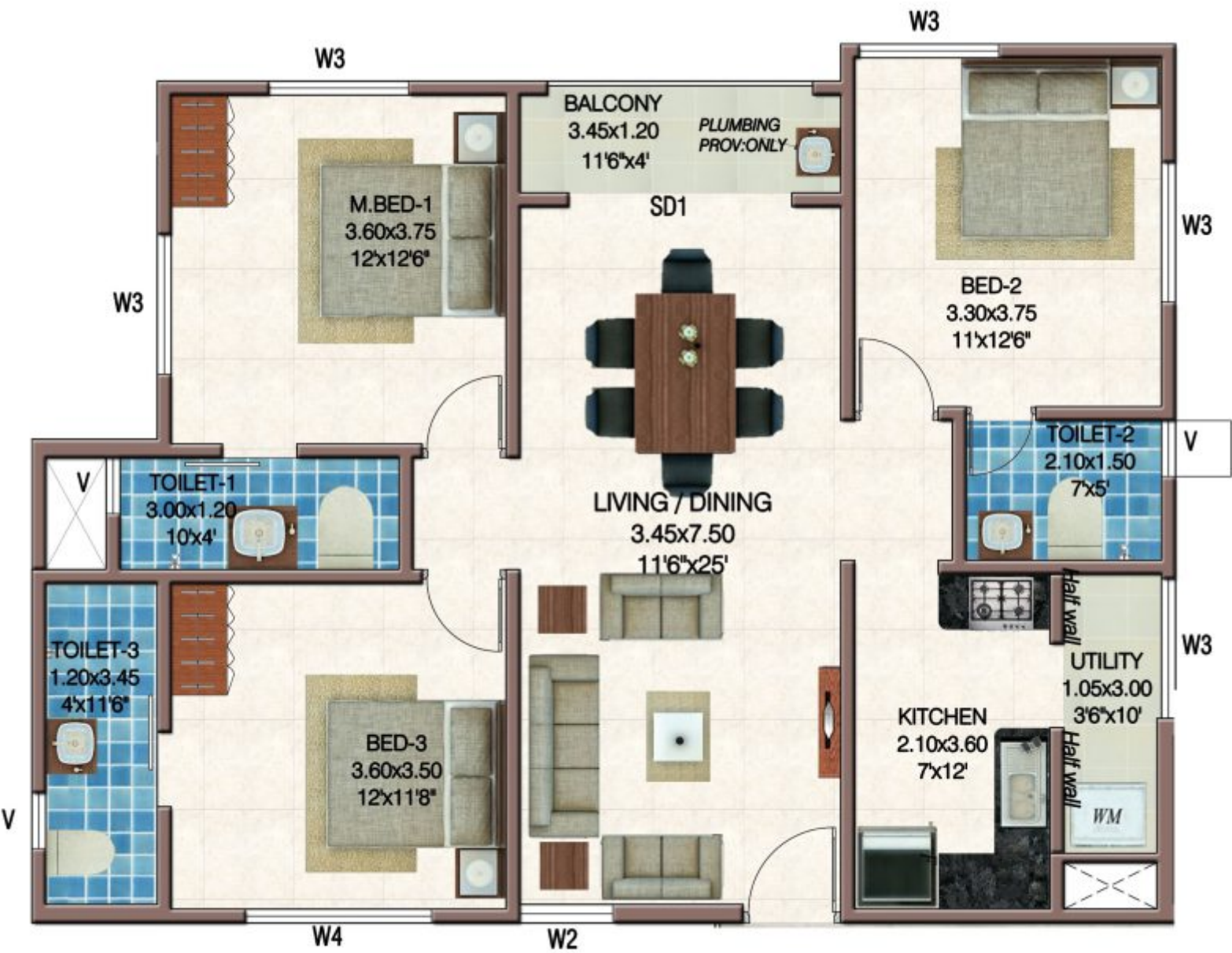
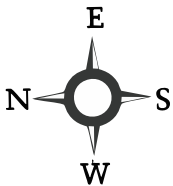




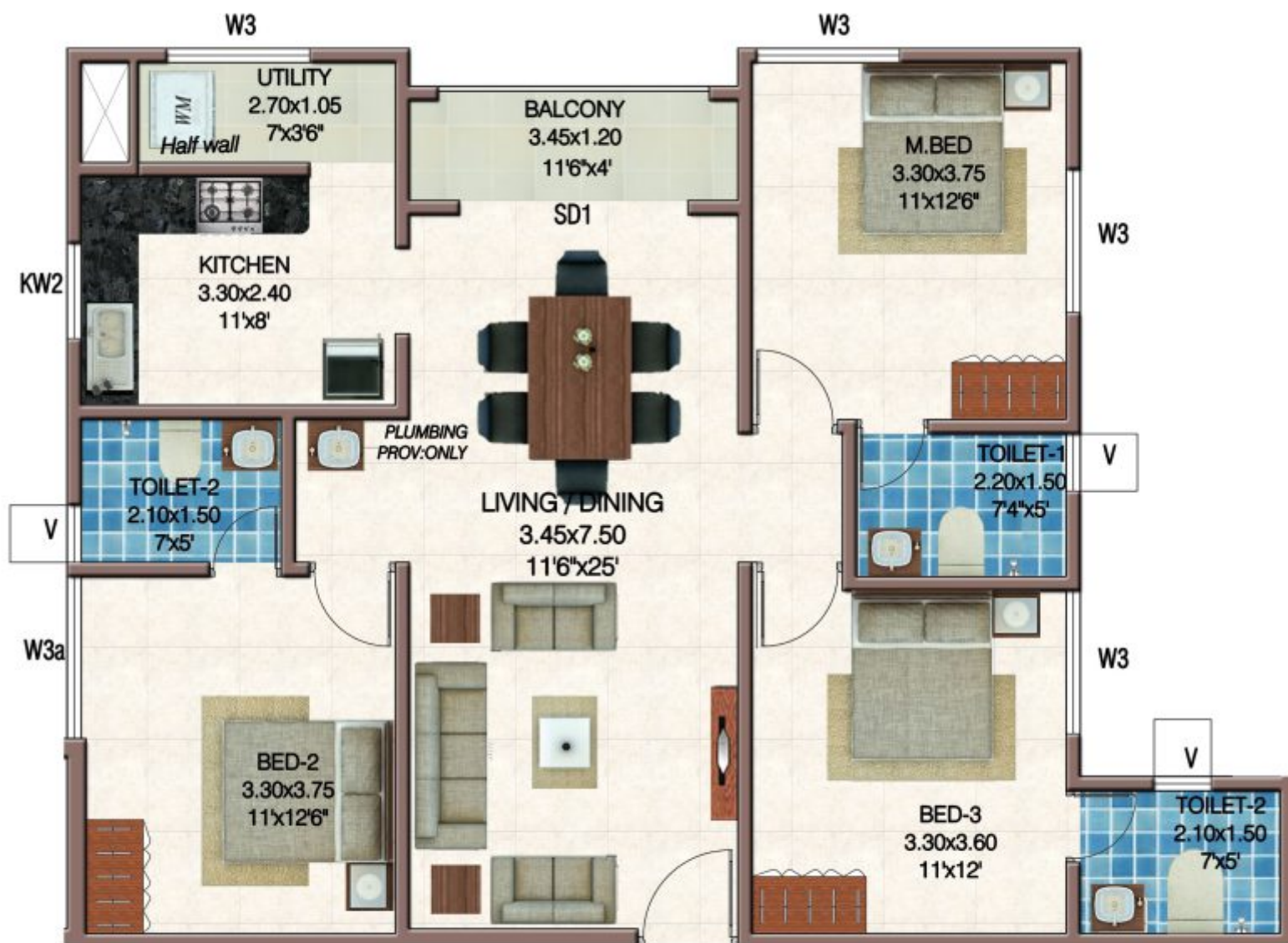
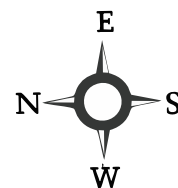


Layout Plan

# Floor Plans



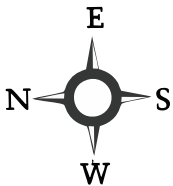
# Floor Plans



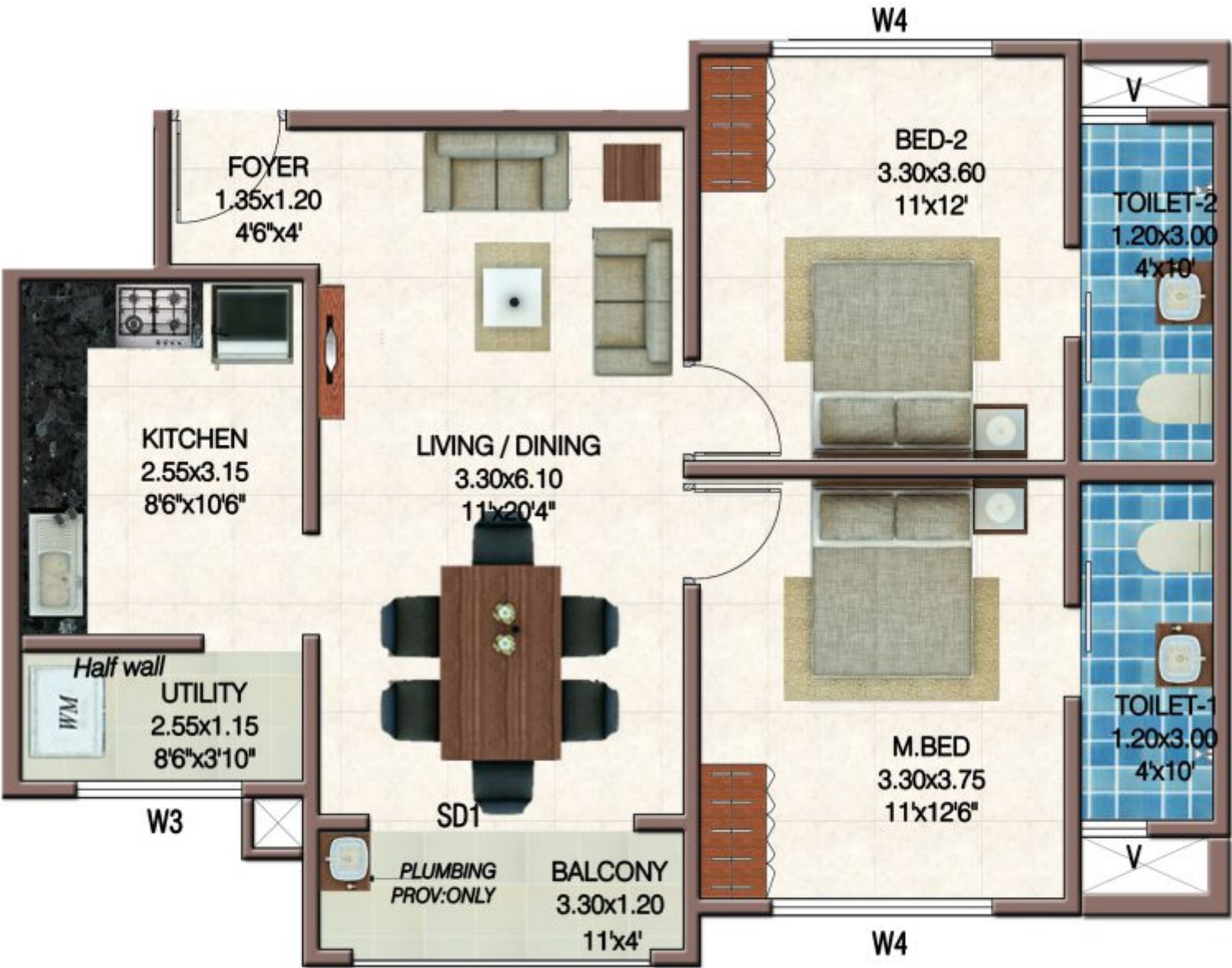
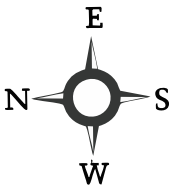
## UNIT 2

3 BHK | SBA 1340 sq. ft.  
Carpet Area 974 sq. ft.

# Floor Plans



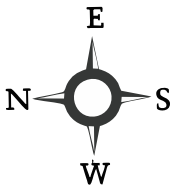
# Floor Plans



## UNIT 4

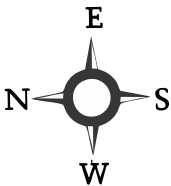
2 BHK | SBA 1015 sq. ft.  
Carpet Area 728 sq. ft.

# Floor Plans

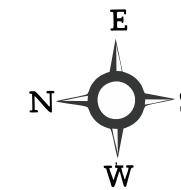


UNIT 5  
2 BHK | SBA 1084 sq. ft.  
Carpet Area 775 sq. ft.

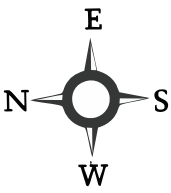
# Floor Plans



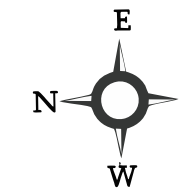
UNIT 6  
3 BHK | SBA 1422 sq. ft.  
Carpet Area 1032 sq. ft.



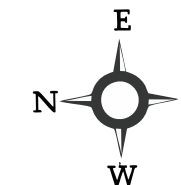
**Terrace Floor Plan**



Typical Floor Plan (1 to 11)



12<sup>th</sup> Floor Plan



13<sup>th</sup> Floor Plan



# Unimagined luxury

Adorned by the finest of luxuries, here life turns more than fabulous. Greenwich is a combination of elegance & sophistication, comfort & convenience, culture & opulence. Now, discover the best amenities with us.

## Amenities

- Air conditioned party hall
- Games room
- Multi-purpose gym
- Visitors lobby with AC
- Rooftop swimming pool
- Centralised gas system
- Provision for intercom facility to each flat
- 24 hours security
- 1 KVA power backup for each flat
- Kids play area
- Car wash area
- Servants/drivers toilet
- Professional waste management system
- CCTV in strategic points for safety & security

# Specifications

Structure	Built on solid foundation, the sturdy framed structure with columns and beams provides a secure frame work for the entire building.
Wall	Concrete blocks/bricks protect you from the nature's weather elements.
Electrical	Concealed conduits with high grade copper wires connections for 24/7 safety and adequate points for power and lighting.
	Provision for split A/C in all bedrooms keeps your apartment at optimum temperature & keeps you cool in the summer heat.
Painting (Internal walls)	Premium emulsion roller finished paint with cheerful colours that add colour to your lifestyle.
Painting (Internal roof)	Premium distemper in white colour.
Painting (External)	Good quality weather - shielded paints keeps your investment looking as good as new.
Switches	Sophisticated and trendy looking Modular/equivalent switches in Legrande/equivalent standards that lights your world with joy.
Doors (Main Door)	Imported high Quality processed Veneer shutter with wooden frame and sparkling stainless steel fixtures with Godrej/equivalent branded locks that protect a world of happiness inside.
Doors (Internal Doors)	Imported high quality wooden frame and skin shutter with functionality and style as its main attractions. Toilet door: WPC frame with laminated shutter
Windows	High quality Aluminium windows with 4mm thick plain head glass allows maximum utilisation of natural light.
Flooring	High quality Kajaria/Johnson/equivalent Vitrified tiles for living, dining and bedrooms. Kitchen and toilet flooring with good quality ceramic tiles. High quality Ceramic tiles for all the common area flooring.
Dado Tiling	2 feet height & 7 feet height well adorned glazed dado tile in kitchen, toilets respectively makes maintenance and cleaning a breeze.
Sanitary Fixtures	Jaguar/equivalent brand sanitary fixtures complement the rest of your dream home. Wall mounted EWC for toilets.
CP Fittings	Convenient and fashionable top of the line, best quality chromium plated tap fittings for bathrooms and kitchens in Jaguar/equivalent brands.
Cooking Platform	Classy granite slab/latest artificial material for cooking platform, having trendy Stainless Steel sink with drain board.
Water Supply	Underground and overhead storage tanks of suitable capacity in addition to water source from captive well means no more water worries.
Sewage System	Safe, environment friendly Sewage Treatment Plant (STP) for apartments that are harmonious with its surroundings.
Centralised Gas Connection	Centralised Gas Connection will provide a safe and hazard free environment in your dream home.
Intercom Facility	This capacity helps to make the community united.

Disclaimer: This brochure is purely conceptual and does not constitute a legal offering.  
The promoters/developers reserve the right to alter/delete/add specifications mentioned herein.

**CORPORATE OFFICE, BANGALORE**

Confident Propus, #6, Langford Town,  
Hosur Main Road, Bangalore 560 025.  
T: +91 91084 44509

---

**TRIVANDRUM:**

Confident House, TC 13/1151(7),  
Kannammoola, Medical College P O - 695 011.  
T: +91 98955 23333

---

**KOCHI:**

Confident House, 868/2,  
Sahodharan Ayyappan Road, Vyttila - 682 019.  
T: +91 98959 14444

---

**THRISSUR:**

Confident House, 11/605, Mathrubhumi Jn.,  
Veliyannur P O - 680 021.  
T: +91 95677 54444

---

**KOTTAYAM:**

Confident House, #206, Mannakulathil Towers,  
LBS Road, Collectorate P O - 686 002.  
T: +91 98953 44499

---

**U.A.E:**

No 292, Unique World Business Center,  
Near Ansar Gallery Building, Al Karama,  
Dubai, P.O. Box: 87556.  
T: +971 55 33 87 577

---

E: [rahil.rahman@confident-group.com](mailto:rahil.rahman@confident-group.com)    [www.confident-group.com](http://www.confident-group.com)



Thodayad, Bypass Junction,  
Calicut - 673 017. T: +91 81293 21111