



Hello Home!

OPEN UP TO A UNIQUE LIVING EXPERIENCE.



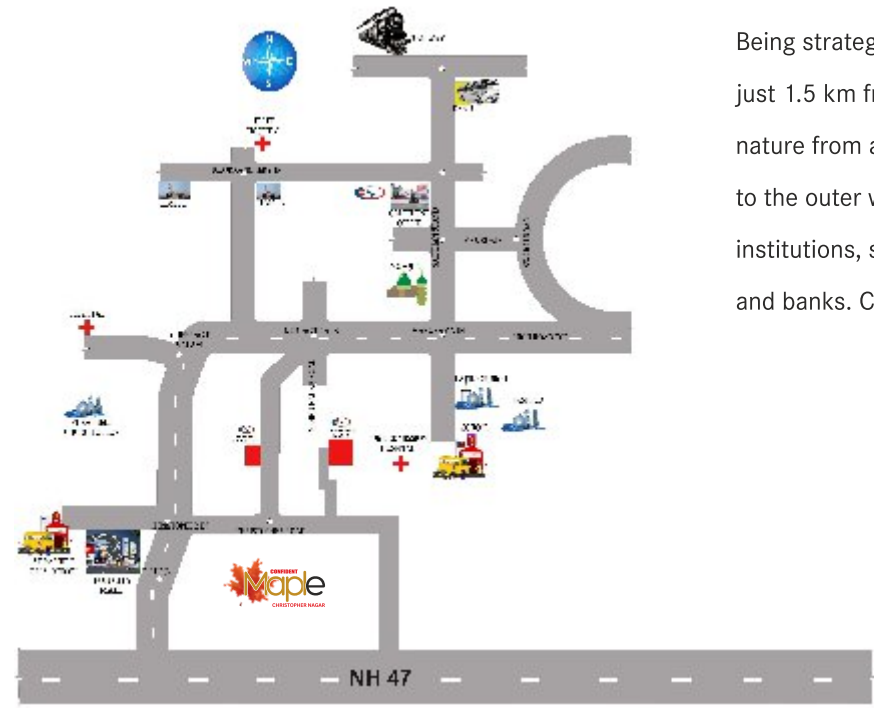
A realm of unforgettable moments, stories and experiences, isn't it fascinating? Maple, a Smile home project by Confident Group offers you everything and more at a dream price! This luxury project is affordable in every aspect and it welcomes you to enjoy an uncompromising life. Maple is nestled in the lap of nature, placing you right at the centre of convenience. The project comprises of 90 units of 2 BHK residences in G+12 floors. With only 8 units on each floor, these homes assure complete safety and privacy. Confident Group has been delivering premium affordable homes for a while now and every time it is a special experience. Grab your special home and smile!

Hello Smile!





Hello Life!



Being strategically located at Christopher Nagar, Thrissur, just 1.5 km from Ollur Junction, this home embraces nature from all parts and offers unparalleled connectivity to the outer world. This locale is very close to educational institutions, supermarkets, religious centres, hospitals, and banks. Come and say hello to life!

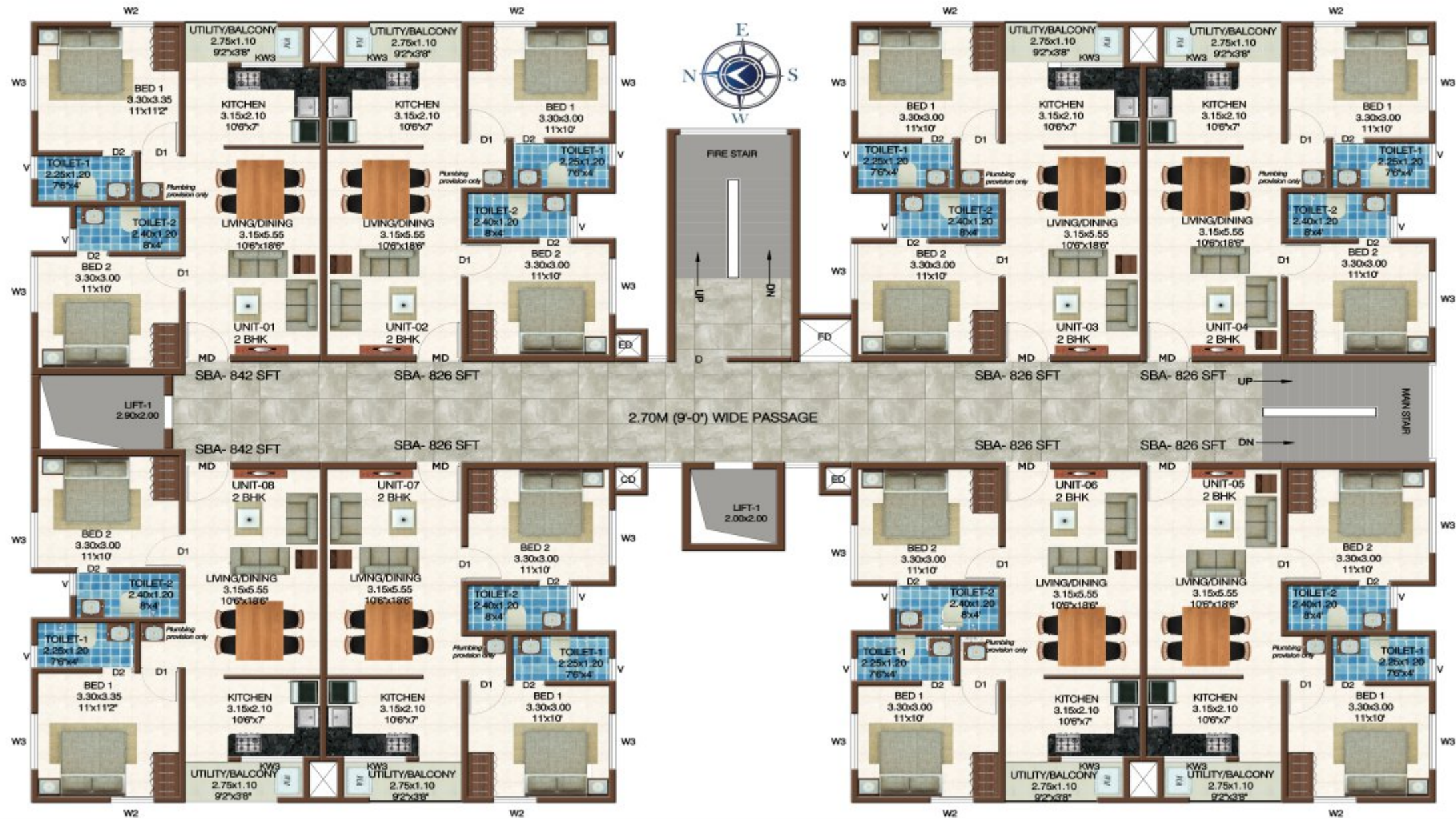
DISTANCE TO MAJOR LOCATIONS

Super Markets, Bank	0.50 Km
Church	1 Km
Temple	1.40 Km
Ollur Jn.	1.50 Km
Hospital	2 Km
Govt. College	3 Km
NH 47, 4 Line Highway	3.50 Km
Manorama Jn.	4 Km
KSRTC, Railway	4.50 Km
Swaraj Round	4.50 Km



Layout plan





Typical Floor Plan (1st to 11th)



12th Floor Plan



Hello Happiness!

Don't find happiness, happiness finds you at this home. Maple redefines the true meaning of comfort with countless possibilities. With rejuvenating facilities like swimming pool, games room, gymnasium and party hall, here every moment turns precious. It's time to live a happy life!

- Party hall
- Swimming pool
- Multipurpose gym
- Kids play area
- 24 hours security
- Games room
- Reception area
- Intercom facility for common area & security cabin
- Centralised gas supply
- 1 KVA power back up for each flat

Hello Wonders!

Specifications

Structure	Built on solid foundation, the sturdy framed structure with columns and beams provides a secure frame work for the entire building.
Wall	Concrete blocks/bricks protect you from the nature's weather elements.
Electrical	Concealed conduits with high grade copper wires connections /FR Cables - Finolex/RR or equivalent brands for 24/7 safety and adequate points for power and lighting.
	A/C provision (dummy) for all bedrooms keeps your apartment at optimum temperature, keep you cool in the summer heat.
Painting (Internal walls)	Premium emulsion with cheerful colours that add colour to your lifestyle (Asian or Equivalent brands).
Painting (Internal roof)	Premium distemper in white colour.
Painting (External)	Good quality weather – shielded paints keeps your investment looking as good as new (Asian or Equivalent brands).
Switches	Sophisticated and trendy looking modular Legrand or equivalent standard switches with 5 year Warranty that lights your world with joy.
Doors (Main Door & Internal Doors)	Skin door and sparkling stainless steel fixtures with Godrej/Dorset/Equivalent branded locks with 5 year warranty that protect a world of happiness inside.
Windows	Latest trend high quality aluminium windows with 4mm thick plain head glass allows maximum utilisation of natural light.
Flooring	Johnsons/Cera/Equivalent Vitrified tiles for living, dining and bedrooms. Kitchen and toilet flooring with good quality ceramic tiles. Quality ceramic tiles for all the common area flooring.
Dado tiling	2 feet height well adorned glazed dado tile above the kitchen slab from Johnsons/Cera/Equivalent brands. 7 ft height glazed/Matte finished dado tile in Johnsons/Cera/Equivalent brands in toilets makes maintenance and cleaning a breeze.
Sanitary Fixtures	Hindware/Cera/Equivalent sanitary fixtures complement the rest of your dream home .
CP Fittings	Convenient and fashionable top of the line, best quality chromium plated tap fittings for bathrooms and kitchens in Cera/Equivalent brands.
Cooking Platform	Classy granite slab for cooking platform, having trendy Stainless Steel sink with drain board.
Water Supply	Underground and overhead storage tanks of suitable capacity in addition to water source from captive well means no more water worries.
Sewage System	Safe, environment friendly Sewage Treatment Plant (STP) that are harmonious with its surroundings as per PCB norms.
Intercom Facility	Facility with one connection in the common area for each floor, lifts and security cabin. The facility helps to make the community united.
Kitchen	Kitchen with half wall. Customization allowed with toughened glass partition/ block work at additional cost.
Centralised Gas Connection	Centralised Gas Connection will provide a safe and hazard free environment in your dream home.

Disclaimer: This brochure is purely conceptual and does not constitute a legal offering.
The promoters/developers reserve the right to alter/delete/add specifications mentioned herein.

CORPORATE OFFICE, BANGALORE

Confident Propus, #6, Langford Town,
Hosur Main Road, Bangalore 560 025.
T: +91 91084 44509

TRIVANDRUM:

Confident House, TC 13/1151(7),
Kannammoola, Medical College P O - 695 011.
T: +91 98955 23333

KOCHI:

Confident House, 868/2,
Sahodharan Ayyappan Road, Vyttila - 682 019.
T: +91 98959 14444

CALICUT:

28/975, Thodayad, Bypass Junction,
Mavoor Road - 673 017.
T: +91 81293 21111

KOTTAYAM:

Confident House, #206, Mannakulathil Towers,
LBS Road, Collectorate P O - 686 002.
T: +91 98953 44499

U.A.E:

No 292, Unique World Business Center,
Near Ansar Gallery Building, Al Karama,
Dubai, P.O. Box: 87556.
T: +971 55 33 87 577

E: sales@confident-group.com www.confident-group.com



CONFIDENT GROUP®
www.confident-group.com

THRISSUR: Confident House, 11/605,
Mathrubhumi Jn., Veliyannur P O - 680 021.
T: +91 95677 54444