



K-RERA/PRJ/TVM/046/2021

**CONFIDENT**  
**HORIZON**  
LUXURY APARTMENTS

Near Sreekariyam, Trivandrum



Live  
Infinitely









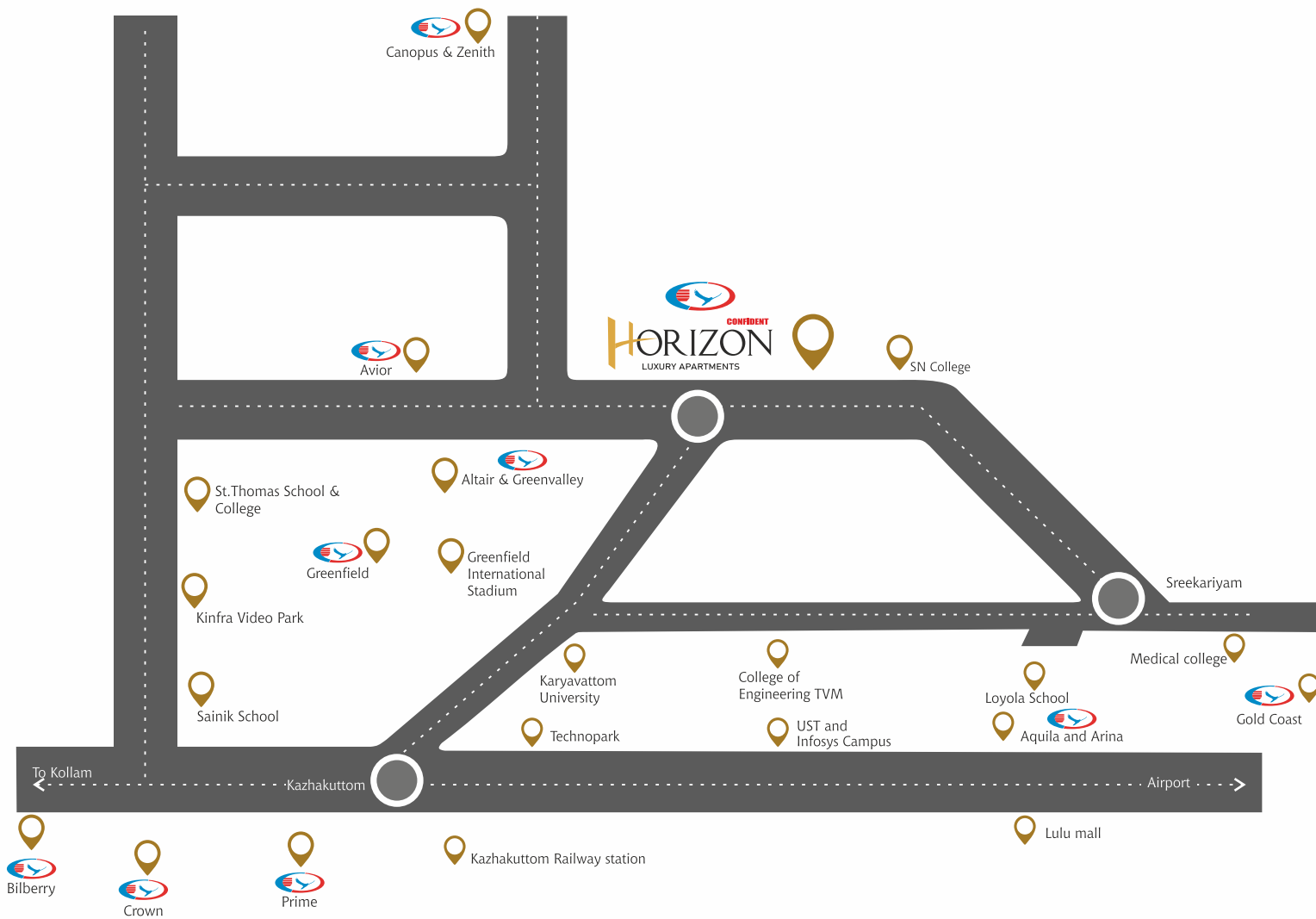
# Infinite dreams

Confident Horizon is the home of your dreams and it is the home that broadens your horizon. This residential project comes from Confident Group - a synonym of trust, innovation, and professionalism. Thus, ensuring an exceptional level of quality with flair and attention to every detail.

Confident Horizon has 17 storeys and it offers 2&3 BHK residence options. These residences feature spacious rooms with splendid craftsmanship and boundless creativity for you. The rare combination of fine artistry and sheer elegance creates an astounding visual affair at this ultra-modern luxury abode. Come, start living your dream life here!

---

This brochure is conceptual and the pictures are for representational purpose only and does not contribute a legal offering. The promoters reserve the right to alter/delete/add specifications mentioned herein.

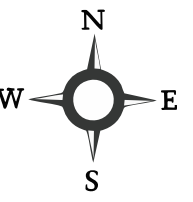


# Infinite possibilities

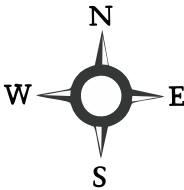
Situated at Chenkottukonam, between Sreekaryam and Pothencode, Horizon ensures proximity to all major landmarks in Thiruvananthapuram like Technopark, Kinfra Park, Magic Planet, Medical College, KIMS Hospital, and Shanthigiri Ashram. The place is one of the fastest developing corridors and it is poised to benefit in a myriad of ways. From educational institutions to shopping centers, here the possibilities are infinite. Simply look at the horizon, spread your wings, fly and conquer!







LAYOUT PLAN



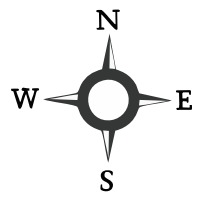
# UNIT PLAN



Unit 01 | 3 BHK | SBA 1150 sq. ft.  
RERA Carpet Area - 872 sq. ft.

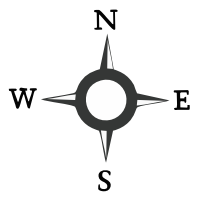


# UNIT PLAN

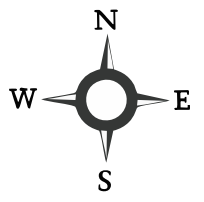


Unit 02 | 2 BHK | SBA 907 sq. ft.  
RERA Carpet Area - 651 sq. ft.

# UNIT PLAN





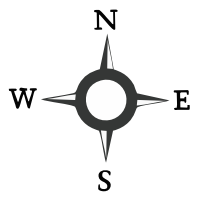


# UNIT PLAN



Unit 04 | 3 BHK | SBA 1071 sq. ft.  
RERA Carpet Area - 808 sq. ft.

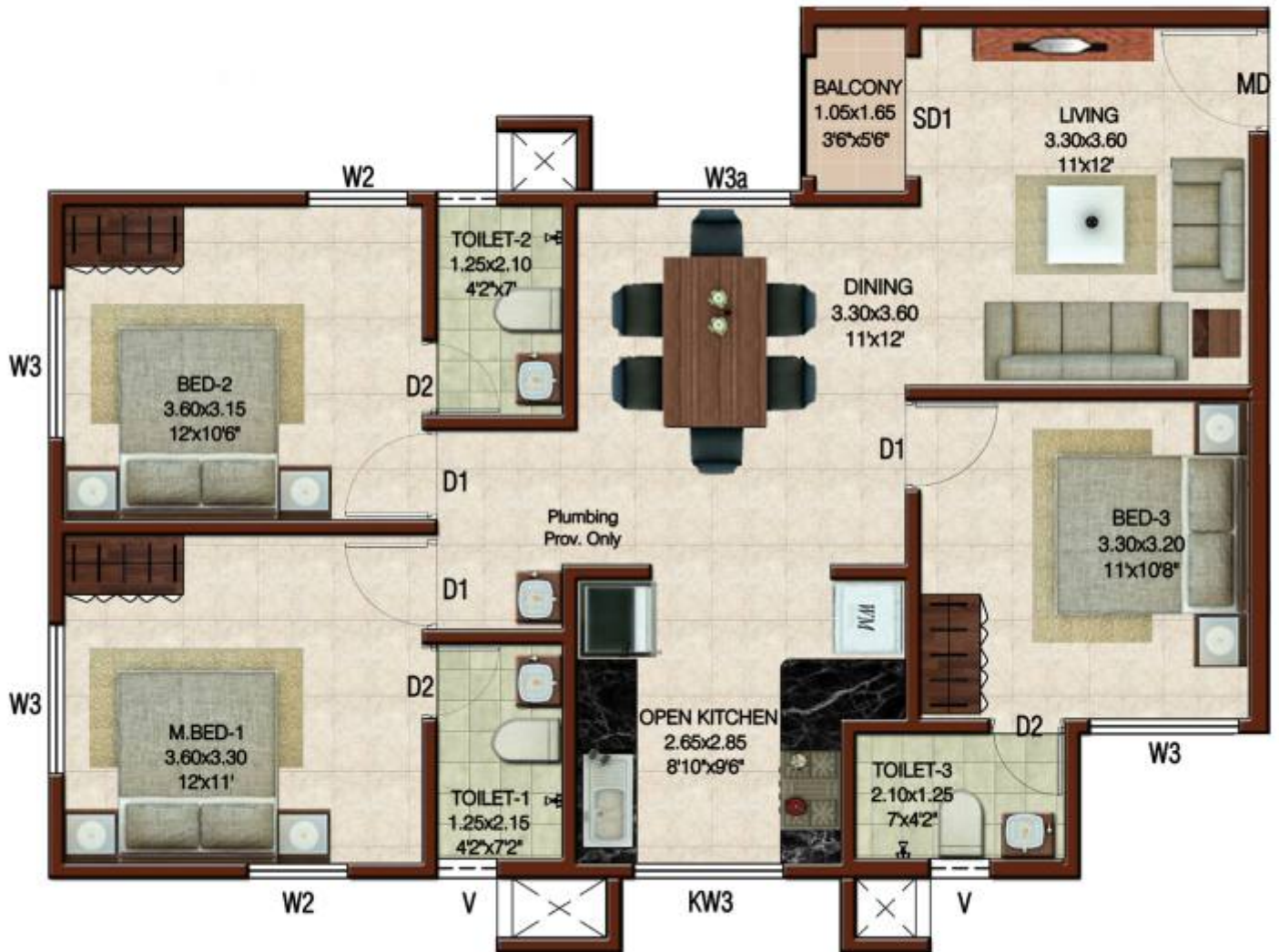
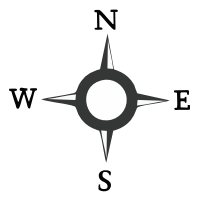
# UNIT PLAN



Unit 05 | 2 BHK | SBA 922 sq. ft.  
RERA Carpet Area - 661 sq. ft.



# UNIT PLAN



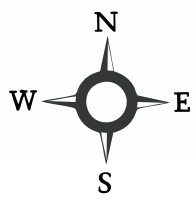
Unit 06 | 3 BHK | SBA 1150 sq. ft.  
RERA Carpet Area - 872 sq. ft.







TYPICAL FLOOR PLAN (17<sup>th</sup>)





# Infinite wonders

Welcome to the world of unbridled luxury! Confident Horizon is an architectural masterpiece that offers irresistible comfort and indulgence. The extraordinary facilities at Horizon ensure unparalleled privacy, relaxation, ecstasy and entertainment. This luxury space promises everything for an opulent lifestyle. Get ready to discover wonders!

## AMENITIES

• AC party hall • Multipurpose gym • Visitors lobby • Games room • Swimming pool • Centralised gas system  
• Intercom facility for common area • 24 hours security • 1 KVA power back up for each flat • Kids play area  
• Car wash area • Servants/drivers toilet • Professional waste management system by Credai/Equivalent professional agency • Visitors car parking





# SPECIFICATIONS

Structure	Built on solid foundation, the sturdy framed structure with columns and beams provides a secure frame work for the entire building.
Wall	Concrete blocks/bricks protect you from the nature's weather elements.
Electrical	Concealed conduits with high grade copper wired connections for 24/7 safety and adequate points for power and lighting.
	Provision for split A/C keeps your apartment at optimum temperature and keeps you cool in the summer heat.
Painting (Internal walls)	Premium emulsion roller finished paint with cheerful colours that add colour to your lifestyle.
Painting (Internal roof)	Premium distemper in white colour.
Painting (External)	Good quality weather - shielded paints keep your investment looking as good as new.
Switches	Sophisticated and trendy looking Modular switches from Legrande /Equivalent (Points as per Confident drawing) that lights your world with joy .
Doors (Main Door)	Prehung Veneer door and sparkling stainless steel fixtures in Godrej/Dorset/equivalent brand with 5 year warranty that protect a world of happiness inside.
Doors (Internal Doors)	Good quality, Pre hung doors with functionality and style as its main attractions.
Windows	Latest trend high quality Aluminium windows with 4mm thick plain glass allows maximum utilisation of natural light.
Flooring	High quality Johnson/Cera/equivalent Vitrified tiles for living, dining, and bedrooms. Kitchen and toilet flooring with good quality ceramic tiles. Elegant ceramic tiles for all the common area flooring.
Dado Tiling	2 feet height & 7 feet height well adorned glazed dado tile in kitchen, toilets respectively in Kajaria/equivalent makes maintenance and cleaning a breeze.
Sanitary Fixtures	Hindware/Cera/equivalent sanitary fixtures complement the rest of your dream home .
CP Fittings	Convenient and fashionable top of the line, best quality chromium plated tap fittings for bathrooms and kitchens in/Cera/Equivalent brands with 5 year Warranty.
Cooking Platform	Classy granite slab /Latest artificial material for cooking platform, having trendy Stainless Steel sink with drain board.
Water Supply	Underground and overhead storage tanks of suitable capacity in addition to water source from captive well means no more water worries. KWA connection is subject to feasibility by the local body and the cost to be shared by the owners as per actuals.
Sewage System	Safe, environment friendly Sewage Treatment Plant (STP) with Ultra Filtration plant that are harmonious with its surroundings as per PCB norms.
Centralised Gas Connection	Centralised Gas Connection will provide a safe and hazard free environment in your dream home.
Intercom Facility	The facility helps to make the community united with ready to use connection in the lifts, club house and security cabin.

**This brochure is conceptual and the pictures are for representational purpose only and does not contribute a legal offering. The promoters reserve the right to alter/delete/add specifications mentioned herein.**

## ONGOING PROJECTS IN TRIVANDRUM



**CROWN**  
Trivandrum  
K-RERA/PRJ/018/2020



**ZENITH**  
Trivandrum  
K-RERA/PRJ/106/2020



**GREENFIELD**  
Trivandrum  
K-RERA/PRJ/101/2020



**PRIME III**  
Trivandrum  
K-RERA/PRJ/174/2020



**AQUILA**  
Trivandrum  
K-RERA/PRJ/100/2020



**BILBERRY**  
Trivandrum  
K-RERA/PRJ/108/2020

## OTHER ONGOING PROJECTS



**LOTUS**  
Thrissur  
K-RERA/PRJ/016/2020



**WHITE BERRY**  
Kochi  
K-RERA/PRJ/130/2020



**PINNACLE**  
Kochi  
K-RERA/PRJ/102/2020



**EXOTICA**  
Calicut  
K-RERA/PRJ/141/2020



**IRIS**  
Kochi  
K-RERA/PRJ/025/2020



**CYGNUS**  
Kottayam  
K-RERA/PRJ/049/2020

## NEWLY LAUNCHED



**GREENWICH**  
Calicut  
K-RERA/PRJ/287/2020



**MAPLE**  
Thrissur  
K-RERA/PRJ/224/2020



**JOINVILLE**  
Kochi  
K-RERA/PRJ/327/2020



**WHITE HOUSE**  
Kochi  
K-RERA/PRJ/288/2020

**READY TO OCCUPY  
PROJECTS ALSO AVAILABLE  
IN TRIVANDRUM, KOCHI,  
THRISSUR & CALICUT.**



**TRIVANDRUM:** Confident House, TC-94/3674, Kannammoola, Medical College PO, Trivandrum – 695 011. T: +91 471 4083 333, MOB: +91 98955 23333

**UAE:** NO. 292, Unique World Business Center, Near Ansar Gallery Building, Al Karama, Dubai, P.O. Box: 87556. MOB: +971 55 33 87 577

**BANGALORE:** Confident Project Office, Confident Propus, #6, Langford Town, Hosur Main Road, Bangalore – 560 025. MOB: +91 99161 46482

**KOCHI:** Confident House, 868/2, Sahodharan Ayyappan Road, Vyttila, Kochi – 682 019. T: +91 484 4093333, MOB: +91 98959 14444

**KOTTAYAM:** Confident Projects – Residential, #206, Mannakulathil Towers, LBS Road, Collectorate P.O., Kottayam – 686 002. T: +91 481 294 3333, MOB: +91 98953 44499

**THRISSUR:** Confident House, No: 11/605, Mathrubhumi Junction, Veliyannur P.O., Thrissur- 680 021. T: +91 487 2238 000, +91 487 2421 407, MOB: +91 95677 54444

**CALICUT:** Confident House, Building No. 29/2241, 3rd Floor, Karimbanakkal Building, Thondayad Bypass, Nellikode, Calicut – 673 016. T: +91 495 309 3333, MOB: +91 81293 21111

Email: [prasad.ps@confident-group.com](mailto:prasad.ps@confident-group.com) Website: [www.confident-group.com](http://www.confident-group.com)